

RED ROCK PASTEL SOCIETY 2020 Juried Member Webshow



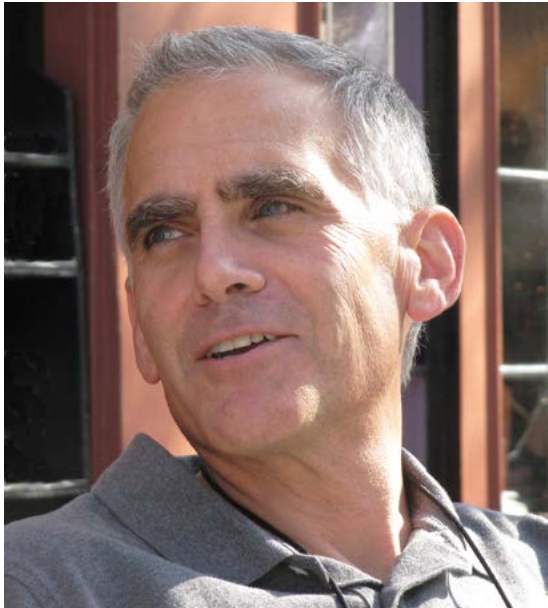
The Catalog
Spring 2020





RED ROCK PASTEL SOCIETY 2020
Juried Member Webshow

To all courageous pastel artists, who continued to share their love
to a fine medium of pastel with the world in spite of the events
of Spring 2020



JUDGE OF AWARDS

Richard Glenn McKinley, PSA-MP, HFH, President IAPS. Richard McKinley has been a professional working artist / teacher for over 40 years.

His work is represented in several national galleries and is in the permanent collection of the Butler Institute of American Art Museum (Ohio), City of Albuquerque (New Mexico), and the Hang Ming Shi Museum (China). He holds artist membership at the Salmagundi Club in NYC and has participated in their American Masters Exhibition.

He holds Master Pastelist designation with the Pastel Society of America and in 2010 was inducted into their Hall of Fame at the National Arts Club in NYC. In 2012, Richard was designated Pastel Laureate by the Pastel Society of the West Coast. His oil and pastel paintings have been featured in numerous National / International art publications including: Southwest Art, American Artist,

Workshop magazine, Artist magazine, Practique des Arts (France), and since 2003 has been a frequent contributing editor to Pastel Journal. He has been featured in 7 instructional DVDs and included in numerous art books. Years of his published materials were compiled in 2010 by North Light publications into the bestselling book: "Pastel Pointers, Top Secrets for Beautiful Pastel Paintings". In 2015 a coffee table sized book; "The Landscape Paintings of Richard McKinley" featuring over 100 of Richard's pastel and oil paintings with commentary was published by North Light Books.

An avid plein air landscape painter, Richard divides his time between painting the locations he is passionate about, reinterpreting those paintings back in the studio, writing about art matters, and instructing painting workshops. mckinleystudio.com

THE AWARD WINNING PAINTINGS

Most people are having a hard time owning or believing and accepting what they have done well. You have to accept the sincerity of when something is excellent. It is excellent, own it!

Richard McKinley



BEST IN SHOW
JUDGE'S STATEMENT

Irina Klimova

On the Kitchen Shelf
19.7" x 23.6"

This piece exemplifies all that pastel, as a fine art medium, is capable of doing. From the variation in the mark making to the layering of pastel, it is a tour de force. The subject matter, still life, which has not always been a major attraction for me personally, didn't detour me from appreciating all of its merits as an exquisite pastel painting. Obviously, since I've selected it as best of show, there had to be something very special that grabbed my attention. And there was, it was the artistic content. The artist's use of color and value variation, subtle color temperature shifts, and atmospheric edge manipulation which brought all of the inanimate still life objects, sitting on a shelf, into focus creating a masterful composition in pastel. Subject matter is merely one element in the definition of beauty. The elements of design are always the biggest factor for me when judging. Irina has taken authority of every element of visual design and given us a showstopper of a painting. It's just a stunning piece. Congratulations to the artist and I look forward to seeing more work from her in the future!



I PLACE
JUDGE'S STATEMENT

Corey Pitkin

Eventide
14" x 11"

Over and over again, throughout the process, I kept going back to this painting. It displays such a quiet mastery of color and edge use, and the introspectiveness portrayed with the figure is riveting. It is a near perfect example of how exquisite classical painting can be. My earliest days learning the craft of painting, which date back to the 1960s and 70s, was focused on portraiture. That was my early passion, then the landscape beckoned. So, my appreciation runs very deep for what can be accomplished with figurative / portraiture works and this artist's work really ticks every box. I frequently stress the importance of being expressive as an artist. This transcends genre, style and technique, and is masterfully executed by Corey in a classical voice. There is something about his work that I find very special. It really makes one pause. And what a beautiful thing that is when we glance at a painting, stop, and ponder. "Eventide" is just such a piece.

**II PLACE****JUDGE'S STATEMENT****Christine Bowman**

Today's Plein Air Trees

12" x 16"

What stood out to me about this painting was its free impressionistic style. It's clear that the artist has spent long hours being with, and painting, trees. She has a relationship with them and is expressing how she sees them, which allows us to experience the trees on a more artistic level. What a wonderful gift that is. The author uses words to communicate intent. The painter uses a visual vocabulary. We all know what trees are, we have experienced them in various forms, but through this artist's eyes we are able to see them in a different way. Thus, we grow as human beings. On our next walk in a wooded forest, because of having seen this painting, we will gaze at trees differently. We will have changed. I congratulate the artist for bringing such a level of sensitivity and expression to the subject matter.

**III PLACE****JUDGE'S STATEMENT****Solene Tartivelle**

Walking on the Moors

9" x 12"

This painting stopped me in my tracks. It grabbed my attention from the first time I looked at the juried works. It ticks so many creative boxes. I love seeing work that pushes towards a more contemporary landscape attitude. A painting like this, brings more emotion to the landscape. It's something I really admire and wish that I could do more of in my own work, but my tendencies lean towards being more literal. This artist has brought it all together: the gesture, the simplicity, the abstractness of the landscape. There is so little there and yet so much emotion and power. And then when I read the title "Walking on the Moors" I went "Wow! Yeah! That's just what it communicates!" This is a permission piece for a lot of us as pastelists. It reminds us that we need to foster the growth of the pastel medium and encourage new attitudes and new forms of expression, while at the same time honoring classicism. So, congratulations to Solene, it's a beautiful piece of artwork!



HONORABLE MENTION
JUDGE'S STATEMENT

Cindy Gillett
Cast Shadow
12" x 12"

JUDGE'S STATEMENT: In the jury selection for this exhibition, there were several artists that had more than one piece accepted, and this artist was one of them. I really appreciated seeing them together, as a body of comparative work. The artist has worked around the theme of an old cast iron pot and the woven rug upon which it sits. What really stood out about this piece, beyond its technical excellence, was that the artist had taken a chance and used an interesting perspective, one of looking straight down upon the pot and patterned woven rug, while the others were a bit more traditional. The beauty of the cast shadow and textures from this visual perspective elevated it beyond just a classic still life to a more contemporary depiction. Classical in rendering and yet modern in attitude. A real standout piece within the exhibition.



HONORABLE MENTION
JUDGE'S STATEMENT

Linda Mutti
Dawns Early Light
12" x 20"

JUDGE'S STATEMENT: Another artist that has several pieces in the exhibition, and they are all lovely. But for me, this one really stood apart from the other works from Linda. While demonstrating a classically strong representational landscape aesthetic and clearly having been informed by a mature plein air artist's hand, it was the beautiful, subtle orchestration of the painting that elevated it. One doesn't have to be yelled at to know where it is an artist wants us to be visual drawn. We instinctually follow the pathway they lay out. Along that pathway we pause at strategic points within the composition where they place a slight elevation of color saturation, an edge, or a little subtle echo of color change. These form the musicality of the composition, and the power of their use belongs to the artist. We are the appreciative audience and Linda is the conductor of the orchestra.



HONORABLE MENTION
JUDGE'S STATEMENT

Margaret Larlham
Reverie
24" x 20"

JUDGE'S STATEMENT: From the very first review of the exhibition, this piece just stood out. I kept coming back to it, over and over again. Something about it demanded closer scrutiny. It's a beautifully rendered portrait, a very nice painterly hand and gesture, wonderful quality in the flesh tones. Obviously, a very competent draftsman and painter has done the work. But it was the attitude portrayed in the young man and the imagery utilized in the surrounding background that transformed it from being just another competent portrait into something that makes a statement and tells a story. It involves our imagination and engages us. That is what elevated it above other pieces in the show. I highly congratulate the artist for going deeper and producing something more than a picture, giving us artwork.



HONORABLE MENTION
JUDGE'S STATEMENT

Christine Troyer
The Calling
16" x 20"

JUDGE'S STATEMENT: Another real eye-catcher of a painting within the exhibition. In the art world, especially when exhibiting competitively, it's about grabbing the attention of the jurors, judge and audience, and that is just what this landscape does. It has the drama of strong contrasting shapes, patterns, and colors that are anchored throughout the composition. The strength of its abstract design holds up at a great distance, even as a smaller painting, giving it a lot of attention. It has visual power and also shows a wonderful painterly hand. There is a confidence felt by how the artist painted the scene. We know that it's pastel and not paint, but the quality of fluidity and mark making lift it to the status of painting versus rendering. Pastel as a diverse medium is capable of both. Just a beautiful piece!



HONORABLE MENTION
JUDGE'S STATEMENT

Sergey Pietila
Parc in Vascoeul
28.7" x 31.4"

JUDGE'S STATEMENT: Having had the opportunity to see some of this artist's works in person, when in France last year while attending an exhibition where I was being featured, I remember being visually struck by the imagery. It was different, and I thoroughly enjoyed the economy and wonderful design being portrayed, that's what this this artist's work is really all about. Very economical use of space. When we observe the painting, we identify what it is we are looking at, but we are given so little detailed information. That, in turn, engages us on a different level than say, hyperrealism and overly render subject matter. I really appreciated that. Among the artist's other accepted entries in this exhibition, this one stood apart because of its use of negative space. The power manifest in the economy of shape and pattern and how little it takes; sometimes just a simple silhouette, to allow us to identify what it is, is enthralling. This artist is a breath of fresh air.



VIEWER'S CHOICE AWARD

Yael Maimon
Expecting
16" x 23"

Our show results including award winning works and amazing closely competed works have been posted online since May 15th. The awards have been announced after our viewers had a chance to vote for their favorite artwork.

On June 1st "Expecting" by Yael Maimon was voted as Viewers Choice with 598 votes.



SENIOR-JUROR

Jimmy Wright, PSA-Master Pastelist, is the president of the Pastel Society of America and an elected National Academician, National Academy of Design. He is on the advisory board of the International Association of Pastel Societies and the editorial boards of The Pastel Journal and The Artists Magazine. In 2019 Wright had one person exhibitions at the M+B Gallery, Los Angeles and Fierman Gallery, NYC. He participated in group shows at Corbett vs Dempsey, Chicago and Fierman, the National Arts Club, CORE Club, all of NYC; Butler Institute of American Art, Ohio.

He has exhibited internationally at Frieze London; Art Cologne; Art Basel

Miami; Felix, Los Angeles; NADA Miami; Cooper Cole, Toronto; Galerie Patrick Seguin, Paris; Hongqiao Contemporary Art Museum, Shanghai and Ming Gallery of Art, Suzhou, PR China; National Taiwan Arts Education Center, Taipei, Taiwan; Tochigi Prefectural Museum of Fine Arts, Tochigi, Japan.

His work is in the permanent collections of the Whitney Museum of American Art, Metropolitan Museum of Art, Art Institute of Chicago, Hammer Museum, Los Angeles, and numerous public and private international collections.

www.jimmywrightartist.com



Cory Goulet

Climate Change
29" x 41"

Jimmy Wright's choice



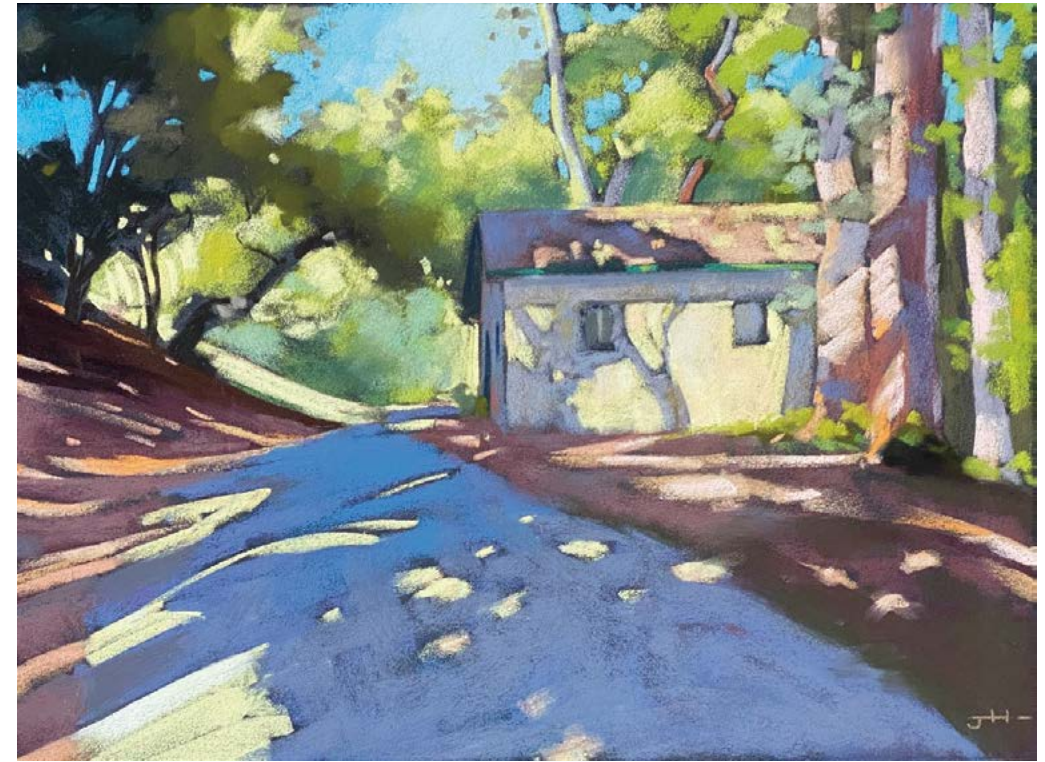
JUROR

Bethany Fields, PSA, IAPS-MC is an American contemporary artist working in pastel. She has gained national recognition with exhibits at the Salmagundi Club, The National Arts Club, both in NYC, the Butler Institute of American Art and the Rockwell Museum.

She regularly hosts and teaches workshops around the country and is a signature member of the Pastel Society of America and the Degas Pastel Society. She is a Master Circle member of IAPS (International Assoc. of Pastel Societies). She is also an active member of American Women Artists and the American Impressionist Society.

Bethany has been featured in the prestigious Pastel Journal magazine and as

an honorable mention winner for the 2017 Pastel 100. Her work has also been chosen multiple times by The Artist's Magazine Annual Art Competition as a finalist. She teaches online at patreon.com/bethanyfields and shares her daily work through her instagram account @bfields.



Jane Hilton

Temescal Cabin
12" x 16"

Bethany Fields's choice



JUROR

Olga Abramova, member of the International Art Foundation (IAF), a member of the Pastel Society of Italy (PASIT) and she is the president of National Pastel Society (NPS) of Russia. For more than 20 years, Olga has concentrated on working with graphic materials, with particular emphasis on pastel, charcoal and mixed media drawing. Her academic background includes a Master's Degree in Graphic Design (teacher of art) from Moscow State Open Pedagogical University and a Master's Degree in Textile Design (Honors Diploma) from Moscow Academy of Design and Applied Arts. The artist has taken part in over 40 exhibitions all over the world. Olga is the

winner of 19th International Pastel Festival of Feytiat, France. (Award — "Le Coup de Coeur 2019"). She has received the Gold Award at IAPS 34th Juried Exhibition Albuquerque New Mexico, USA, 2019. She has won Grand Prix at the ONLINE EXHIBITION of Italian Pastel Society PASIT, Rome, Italy, 2018. Olga has demonstrated the process of creating her pastel paintings at master-classes, demonstration-classes and through online courses. She has publications in the "Pratique des Arts" magazine and Pastel Journal, US. olgaabramova.art



Anna Kalugina
Night
9.45" x 7"

Olga Abramova's choice

THE SHOW

Check out all these marvelous works that made it to the show.
Congratulations to 2020 Red Rock Member Juried Show
Award Winners!

Judge: Richard McKinley, President of IAPS, PSA-MP & HFH, PSWC-PL

Senior-Juror: Jimmy Wright, PSA-Master Pastelist

Juror: Bethany Fields, PSA, IAPS-MC

Juror: Olga Abramova



Anatoly Afanasiev
Kseniya
14" x 12" | \$1000



Julia Dubinina
Daughter
19.6" x 15.7" | \$5000

Sergey Bakin
Ballet 5
39" x 27.5" | \$1500



Sergey Bakin
Ballet 1
27.5" x 19.7" | \$750



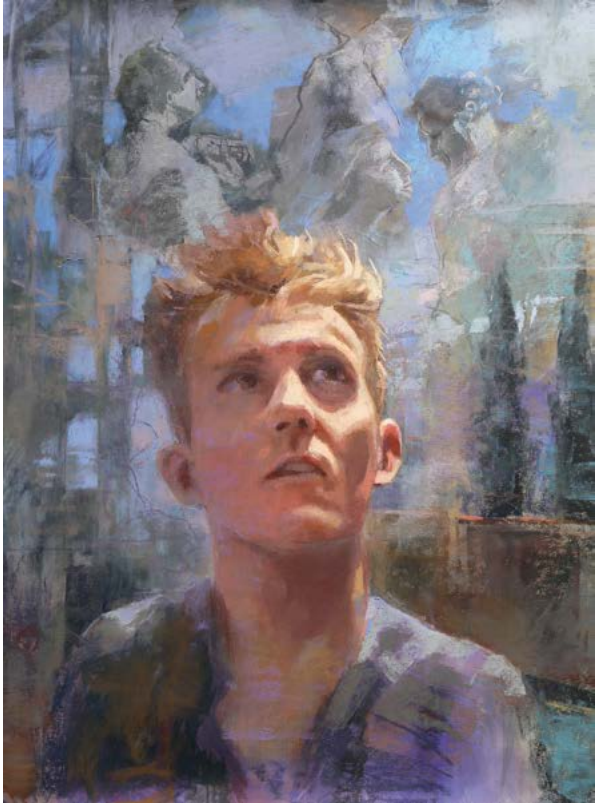
Corey Pitkin
Eventide
14" x 11" | \$750



Corey Pitkin
Stephanie
19" x 12.5" | \$1300



Margaret Larlham
Arroyo Salado Wash
18" x 24" | \$2400



Margaret Larlham
Reverie
24" x 20" | \$3000



Kathryn Kages
Little Strawberry Picker
12" x 9" | \$795

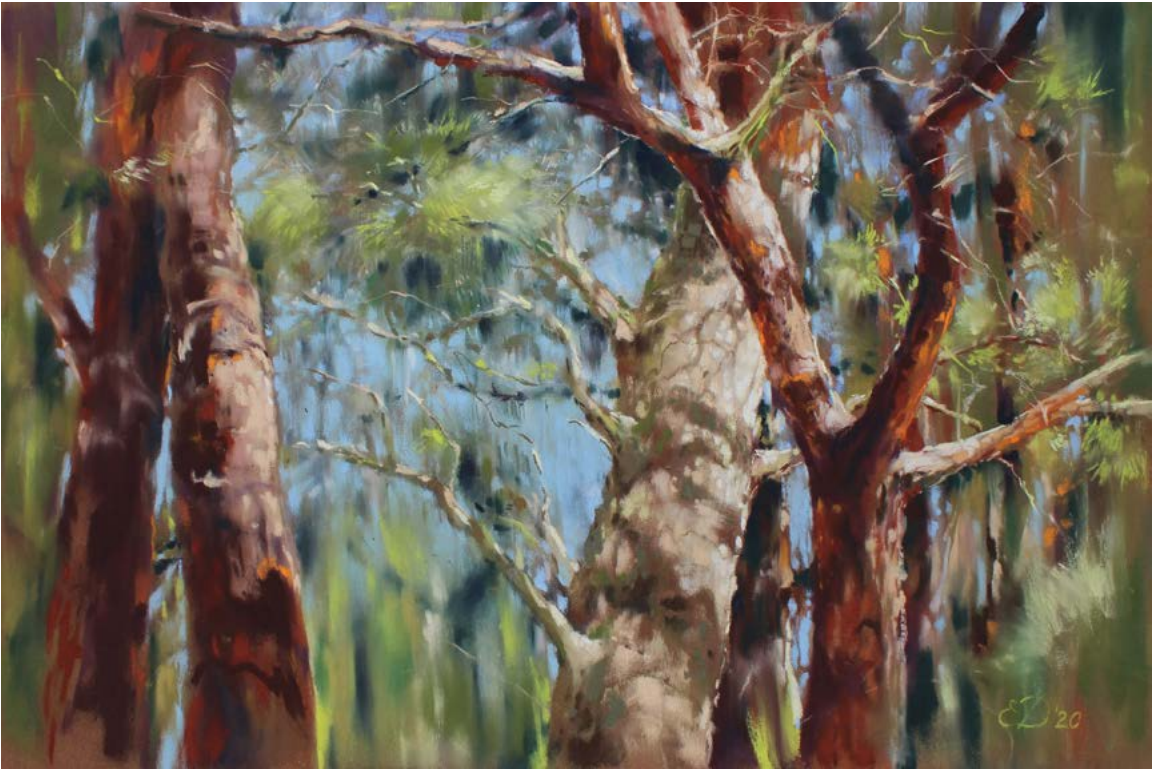
Michelle Spencer
Light the Way
9" x 12" | \$275



Greg Stone
Rocks Near Lyons Colorado
12" x 9" | \$400



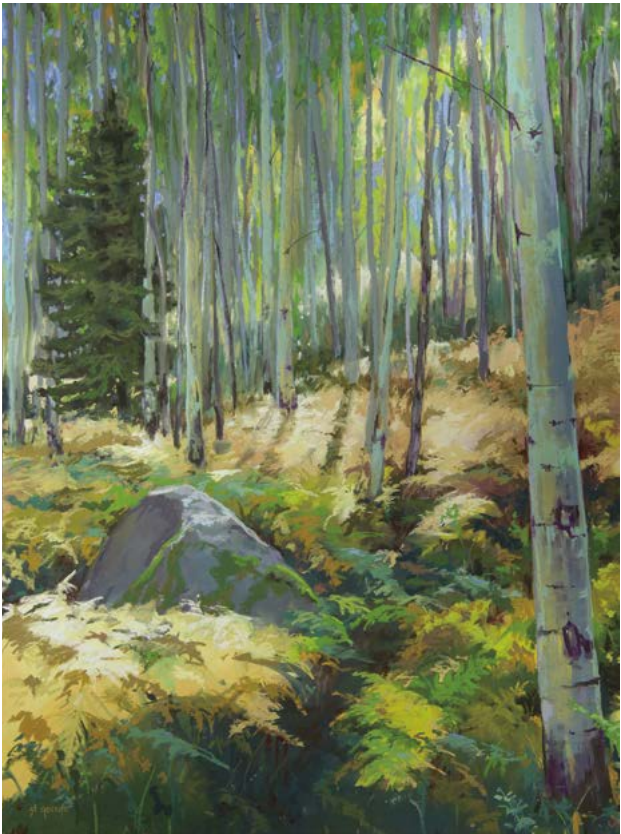
Greg Stone
Winter Reminder
9" x 12" | \$300



Ekaterina Dobrokhotova
Forest Music
12" x 19" | \$1300



Sarah St George
Faded Grace
16" x 20" | \$1600



Sarah St George
The Silver Grove
24" x 18" | NFS



Jane Hilton
Temescal Canyon Light
12" x 12" | \$400



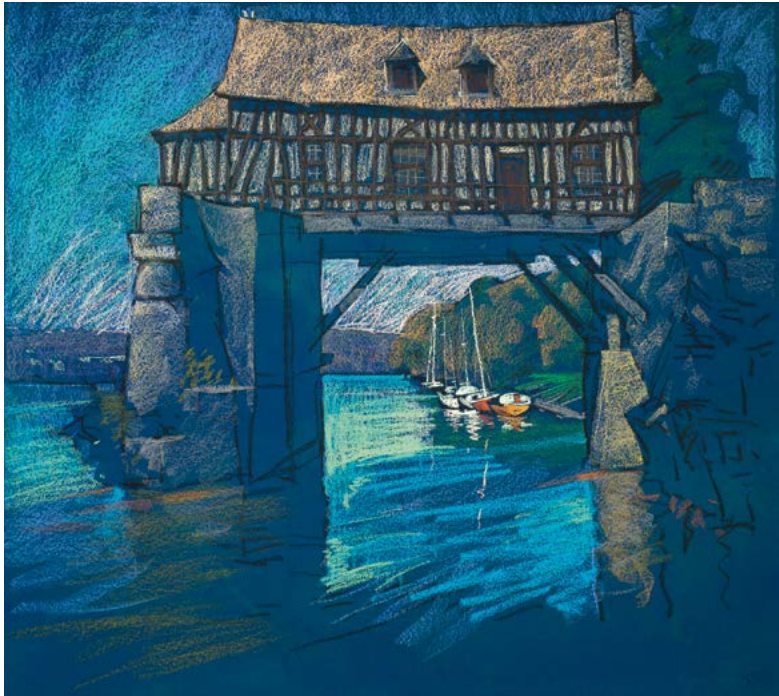
Jane Hilton
Hollister Ranch
12" x 16" | \$400



Jane Hilton
Temescal Cabin
12" x 16" | \$500



Sergey Pietila
Parc in Vascoeuil
28.7" x 31.4" | \$2000



Sergey Pietila
Old Mill. Vernon
28.7" x 31.4" | \$2000



Sergey Pietila
Summer Times.
Mont Saint Michel
28.7" x 31.4" | \$2000



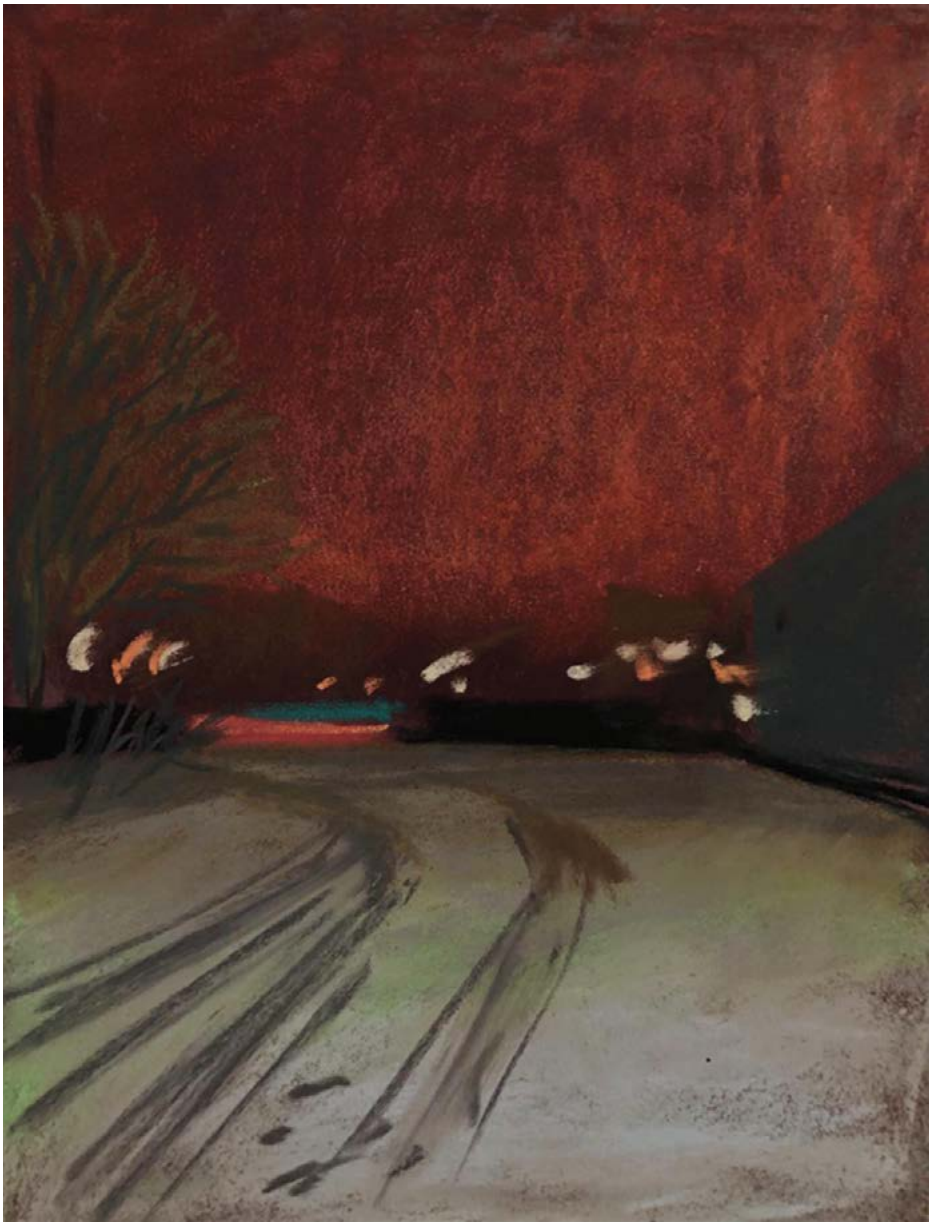
Tony Allain
Bouy
12" x 24" | \$1200



Tony Allain
Sentential Boulder
10.5" x 12.7" | NFS



Tony Allain
Golden Light | Scotland
21" x 27" | NFS



Anna Kalugina
Night
9.45" x 7" | SOLD



Anna Kalugina
Clouds
7" x 9.45" | \$100



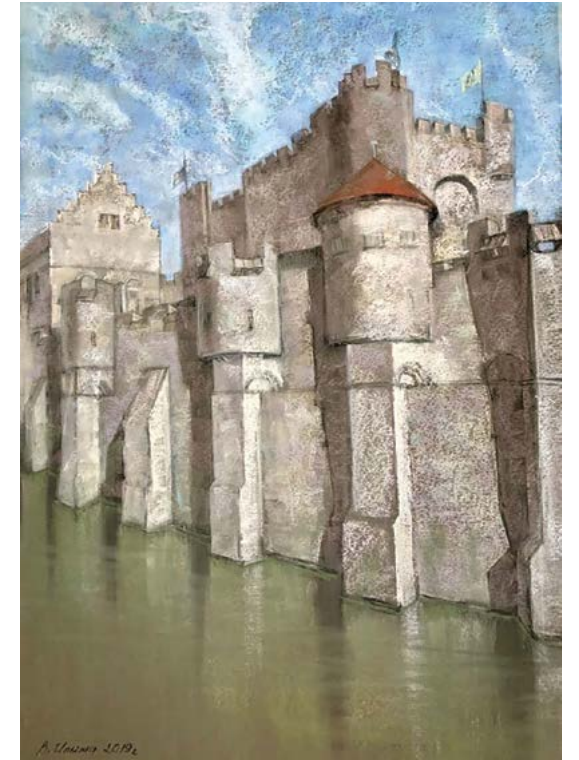
Anna Kalugina
Fields
7" x 9.45" | \$200



Willo Balfrey
In the Ravine
12" x 16" | NFS



Svetlana Kabanova
Morning on the river
8.3" x 11.4" | NFS



Vera Ilina
Castle Gent in the Kingdom of Belgium
28" x 20" | \$500



Jude Galbraith
New Mexico
12" x 16" | \$700



Loriann Signori
Ocracoke Morning
8" x 8" | \$820

Loriann Signori
Wild Green Moment
5" x 7" | \$700



Kahne Smith
September Light
9" x 12" | \$750



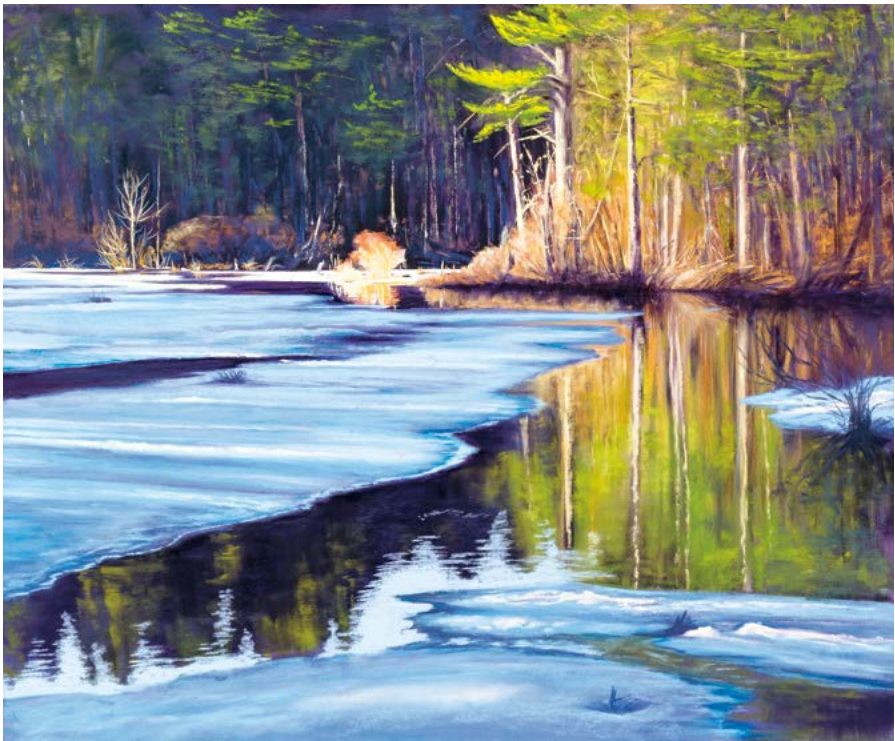
Don Smith
Rubdbeckia1
10" x 8" | NFS



Christine Debrosky
Rio Verde Tarde
16" x 26" | \$1850



Lorraine Trenholm
Chamisa Canyon
8" x 10" | \$450



Svetlana Stegalkina
Spring in New England
16" x 20" | \$500



Karla Leopold
Splendor Outside My Studio Door
15" x 12" | \$675



Karla Leopold
Morning Walk
12" x 12" | NFS



Christine Bowman
Today's Plein Air Trees
12" x 16" | \$550



Natalie Larina
Field Of My Memories
19.69" x 19.69" | NFS



Olga Reukova
Pear
6" x 6" | \$150



Elena Askeri
Field flowers
20" x 16" | \$400



Evgeniya Mio
Red Flower
30" x 22" | \$250



Katya Zaytseva
Morning Bouquet
14" x 11" | \$400



Francesco Ipsan
Flowering cherry
25.5" x 19.5" | \$500



Linda Smith
Jekyll Island
12" x 16" | \$500



Elena Genkin
Sunflower Fields
12" x 16" | \$300



Yana Golikova
Place Where You
Can Touch the Sky
9" x 12" | \$600



Patti Hagan
Fields of Gold
12" x 16" | NFS



Nataly Mikhailuk
Front Garden
18.5" x 12.2" | \$290



Tatsian Harbacheuskaya
Strawberry and Milk
12" x 16" | \$600



Tatsiana Harbacheuskaya
Still Life With Granny Smith Apples
12" x 15" | \$600



Gina Carstens
Summer Tapestry
15.1" x 11.2" | NFS



Gina Carstens
Cascade of Roses
22" x 17" | NFS



Gina Carstens
On an Evening in June
15.1" x 11.2" | NFS



Irina Klimova
On the Kitchen Shelf
19.7" x 23.6" | SOLD



Irina Klimova
Scylla
19.7" x 19.7" | \$400



Irina Klimova
Hotel de Caumont
23.6" x 19.7" | \$350



Cindy Gillett
Cast Shadow
12" x 12" | \$725



Cindy Gillett
Cast Iron and Wool
12" x 12" | NFS



Cindy Gillett
Textures of Home
20" x 16" | NFS



Jeri Greenberg
Unexpected Surprise
14" x 16" | \$650



Jeri Greenberg
Don't Let The Blues Get To You
16" x 18" | \$850



Jeri Greenberg
Green Blankets 11 am
14" x 18" | \$650



Dasha Jamison
Enjoy the Little Things
15" x 12" | \$500



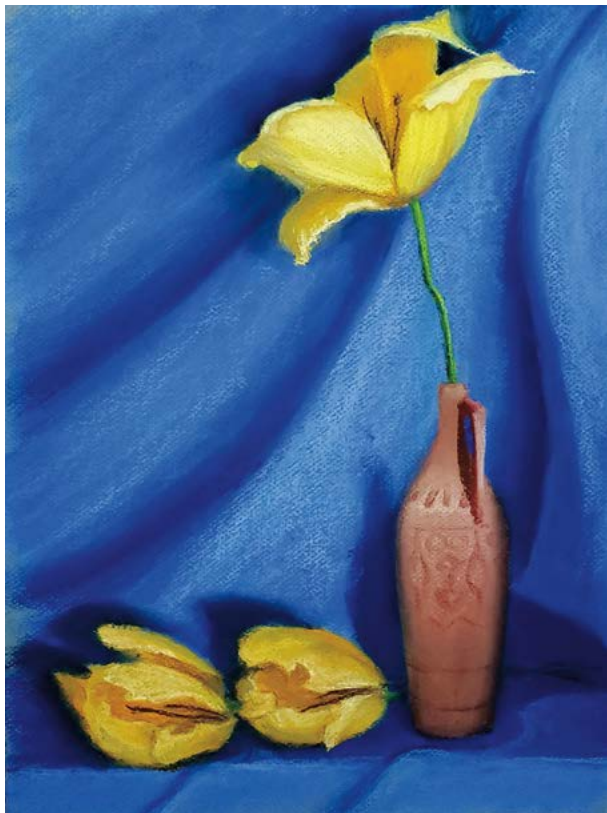
Yana Ivannikova
Water Nymphs
19.3" x 15.2" | \$500



Tatiana Korshunova
Monet's Pond
9" x 12" | \$100



Lilia Epifanova
Blue Summer
16" x 12" | NFS



Olena Nosaryeva
Drops of the Sun
16" x 12" | \$50



Debra Carter
Daylilies in Barcelona
12" x 9" | \$350



Sherri Davis
Autumn Light
8" x 14" | \$250



Yuliya Campbell

A Sanctuary
14" x 20" | \$550



Marcie Shepard

Linnea on the Rocks
36" x 48" | \$3500



Olga Symonenko

Fountain
12" x 16" | \$200



Anastasia Rezvoi

Run Run Run
15" x 24" | \$190

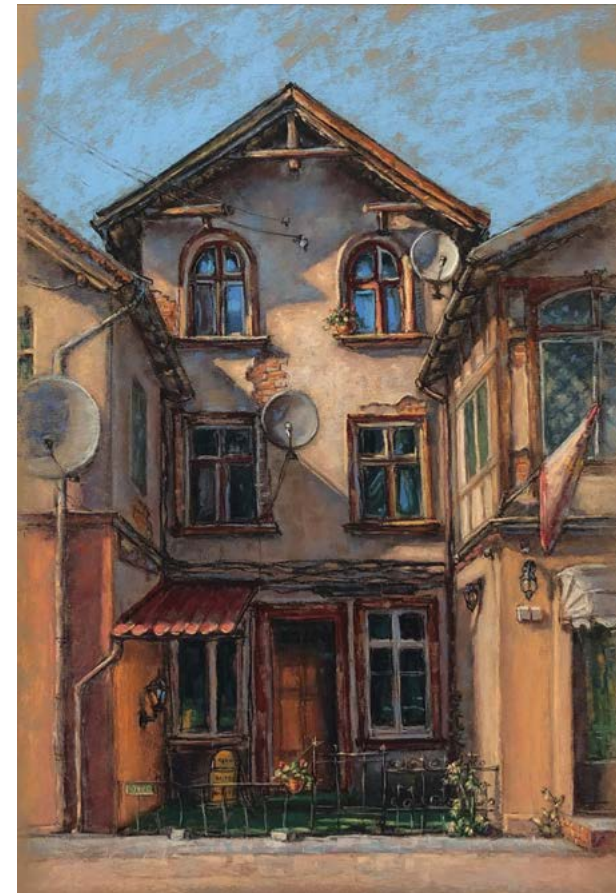
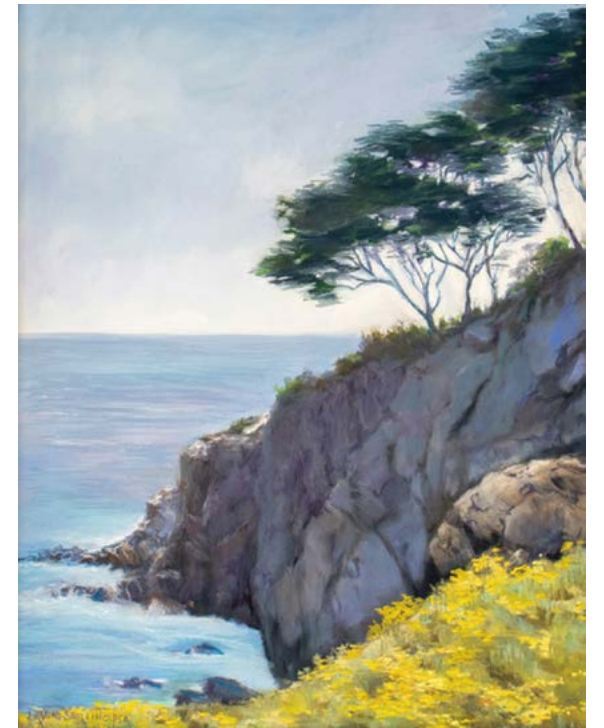


Patty Rios
Bone Pile
9" x 12" | \$500



Julia Bezgacheva
He is Going Forward
11.5" x 8.5" | NFS

Lavone Sterling
Point Lobos View
20" x 16" | \$1800



Natalia Ayas Bezuglova
Old House
14.4" x 10" | \$250



Elena Maksina
Summer Memories
12" x 9" | \$500



Elena Maksina
Almonds Bloom
12" x 9" | \$350



Elena Marder
Julian Hills
10" x 8" | NFS



Elena Marder
Sunrise
10" x 8" | NFS



Alejandra Gos
Desert Superstitions
11" x 15" | NFS

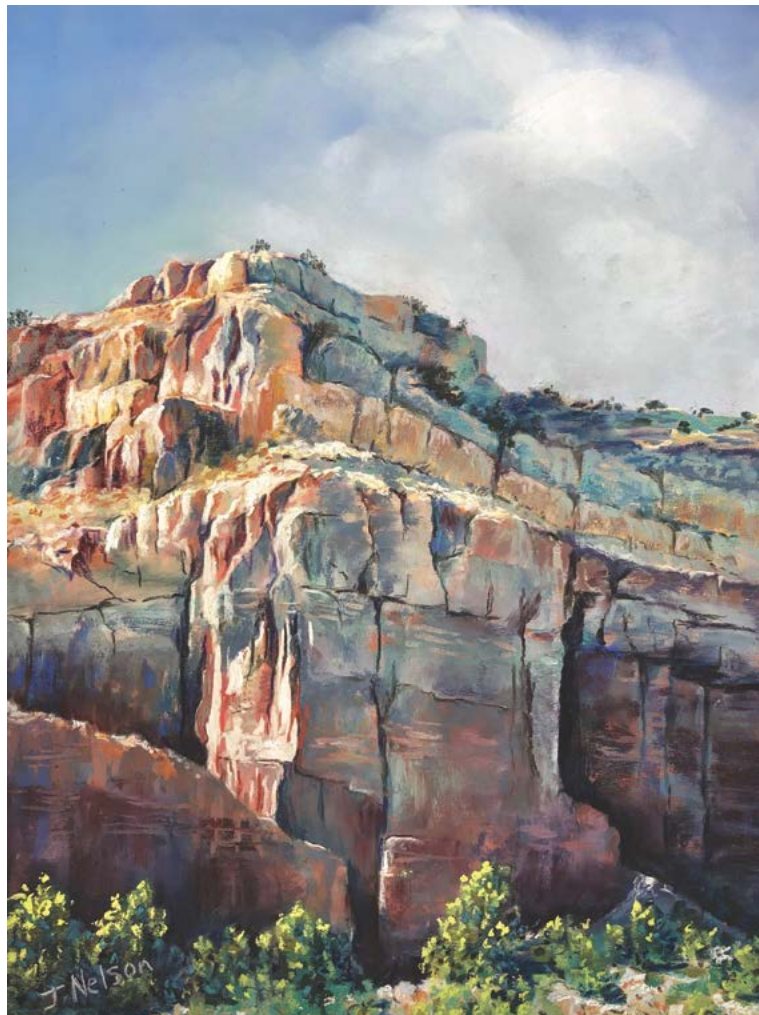
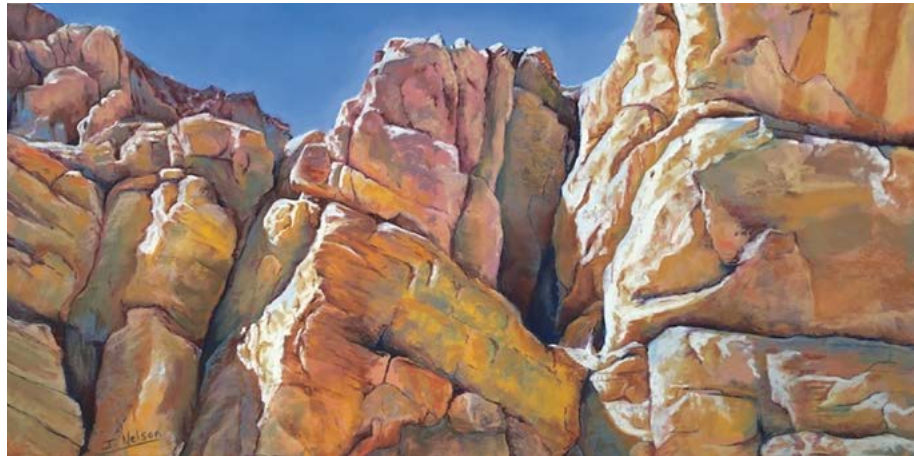


Alejandra Gos
Evening Walk
9" x 11" | NFS



Alejandra Gos
A Closing Act
12" x 12" | NFS

Juanita Nelson
It Rocks
12" x 24" | \$900



Juanita Nelson
Abiquiu Canyon
16" x 12" | \$500



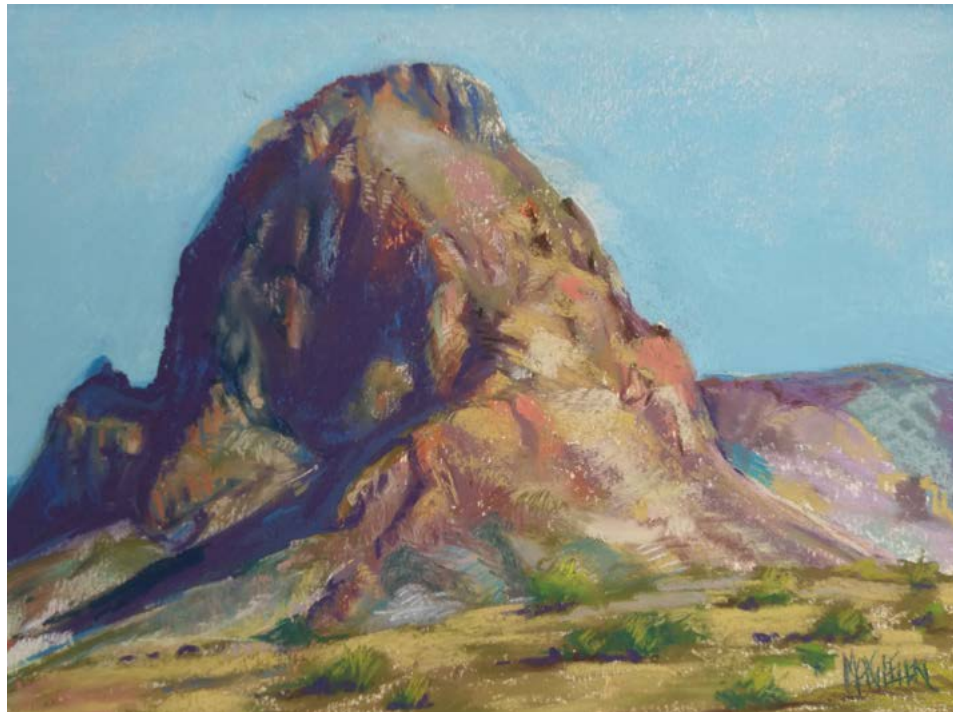
Janan Shannon
Fall at Harriet Lake
12" x 16" | NFS



Janan Shannon
Storm Over Baylands
9" x 12" | NFS



David Gilmore
Totem Pole
12" x 16" | \$500



Cheryl Magellen
Lone Mountain
9" x 12" | \$375



Catherine LaPointe Vollmer
Badlands at Sunset
12" x 16" | \$450



Catherine LaPointe Vollmer
Tyndall Glacier
12" x 16" | \$550



Linda Mutti
Last Light In The Jemez
12" x 16" | \$950



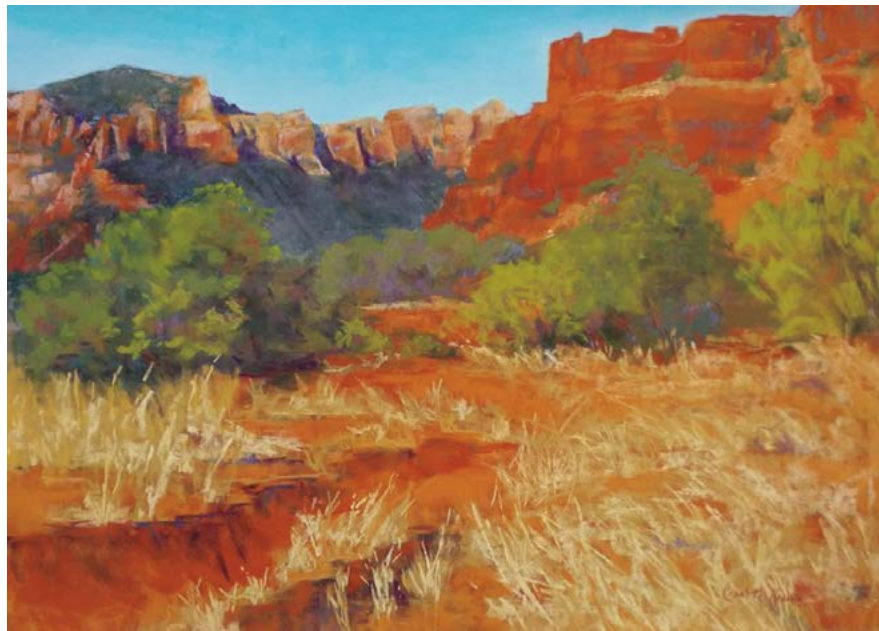
Linda Mutti
Dawns Early Light
12" x 20" | \$1100



Linda Mutti
The Last Hurrah
16" x 20" | \$1200



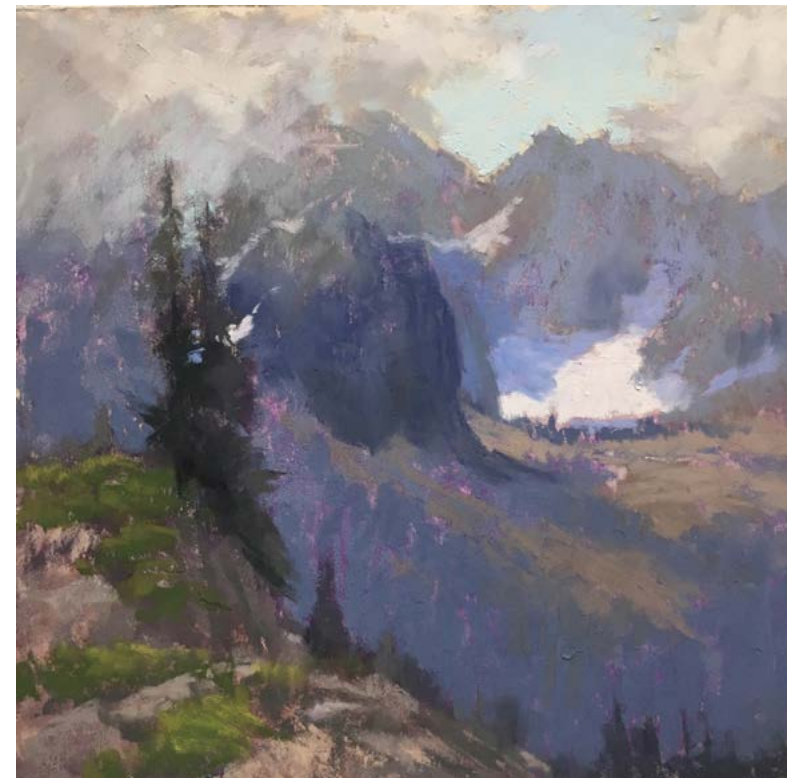
Cosette Kosiba
Outside ABQ
12" x 18" | NFS



Cosette Kosiba
After Yesterday's Rain
17" x 21" | NFS



Christine Troyer
The Calling
16" x 20" | NFS



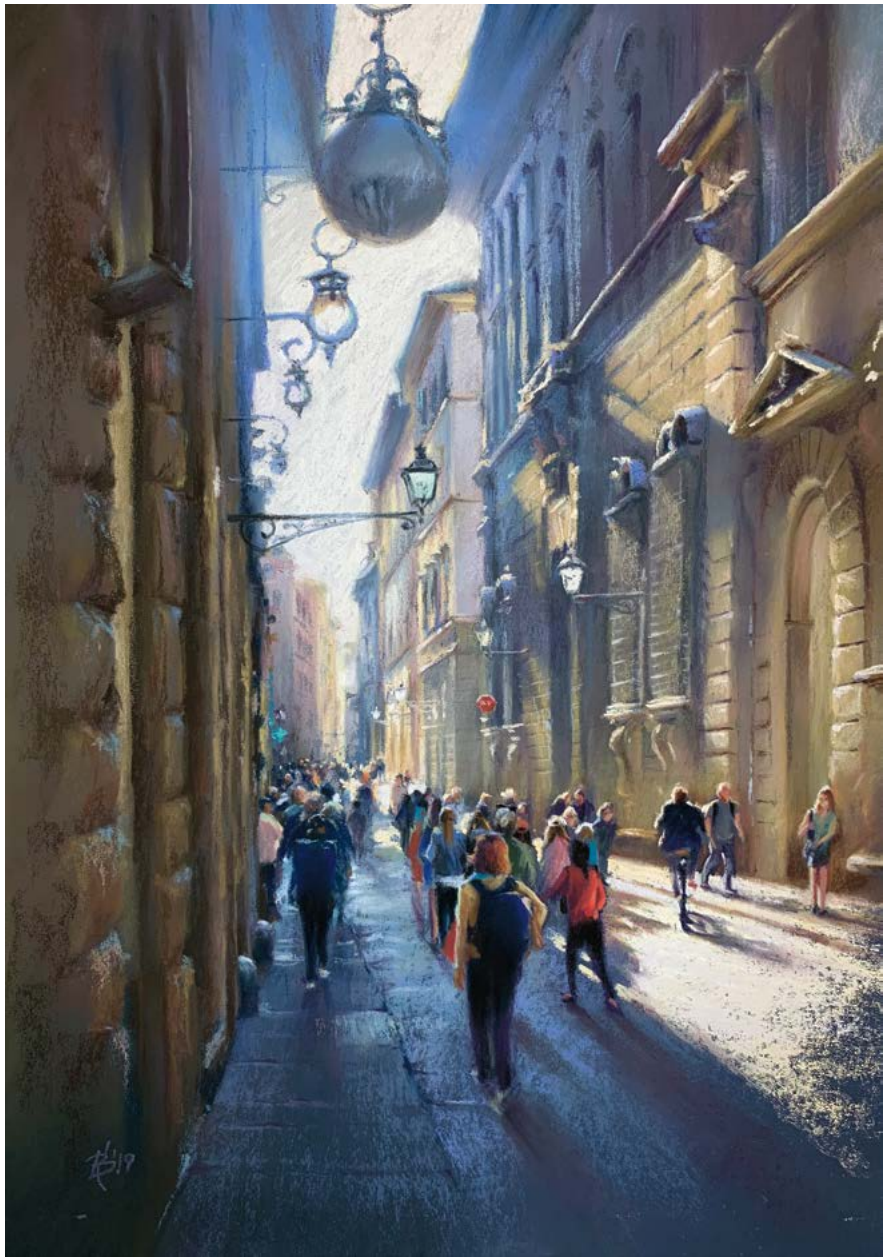
Christine Troyer
Whispers Of The Mountains
8" x 8" | NFS



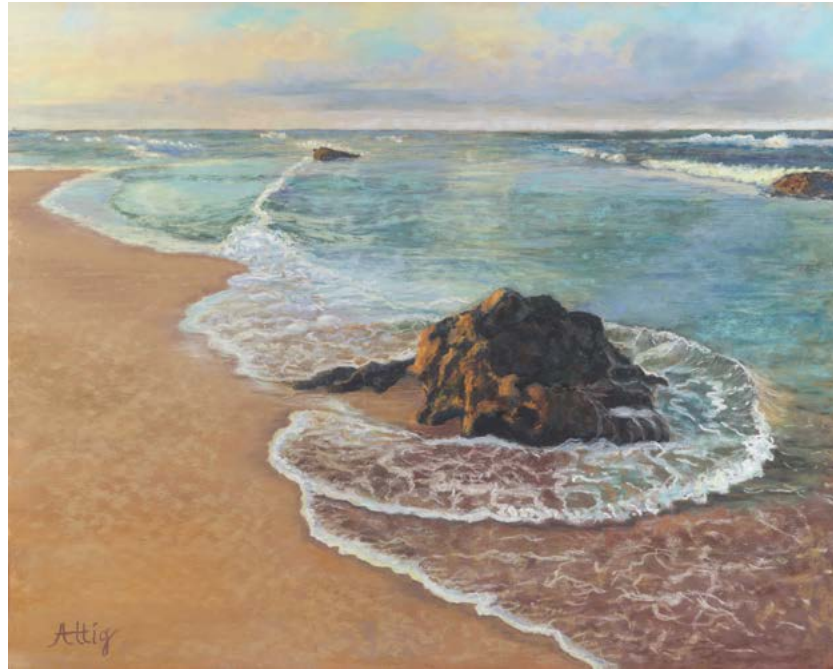
Valeriya Kulikova
In Captivity
16.5" x 25.6" | \$300



Valeriya Kulikova
In Captivity 2
25.6" x 16.5 | NFS



Valeriya Kulikova
I'll Catch Up
18.5" x 13" | \$180



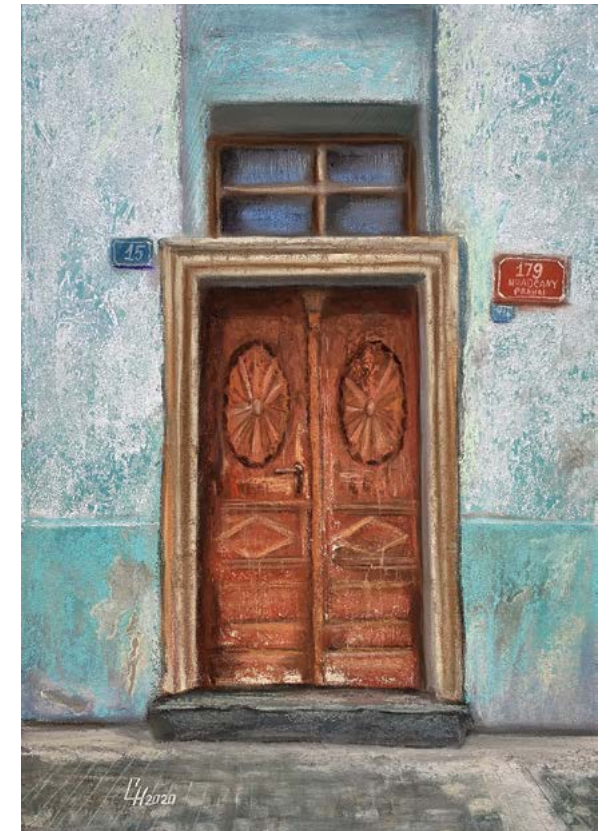
Lynn Attig
Lava and Lace
16" x 20" | \$950



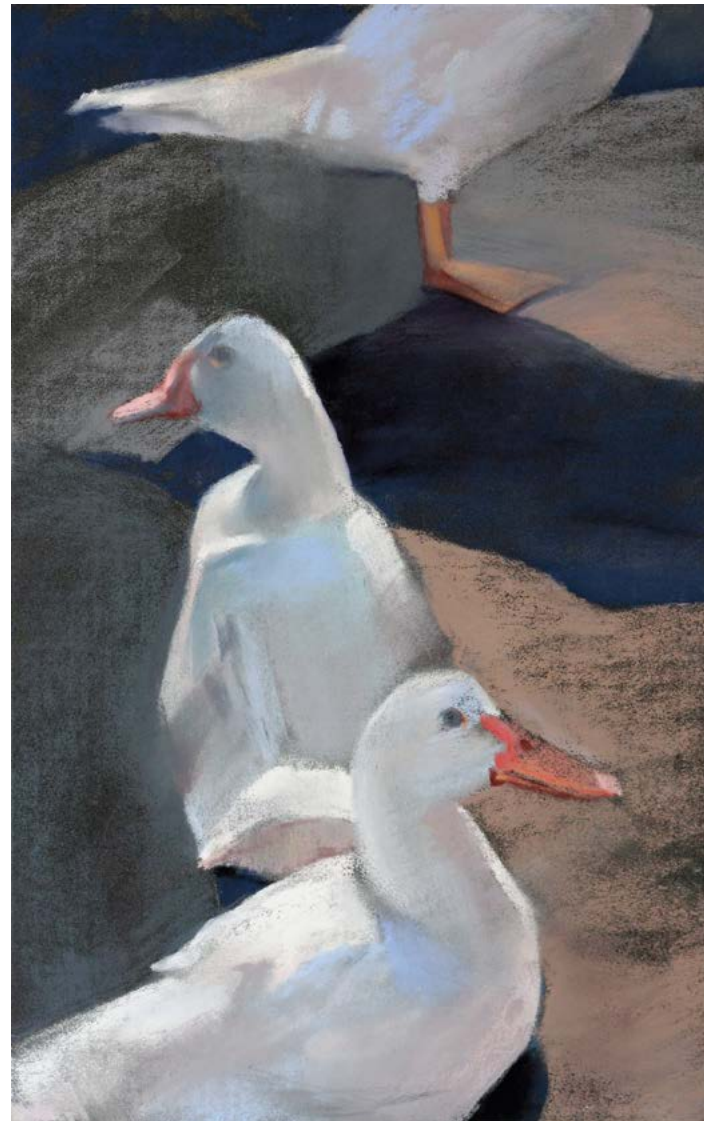
Lynn Attig
Tunnels Beach Tide Pools
12" x 16" | \$750



Olga Romanchikova
Sea Breeze
14" x 19" | \$1250



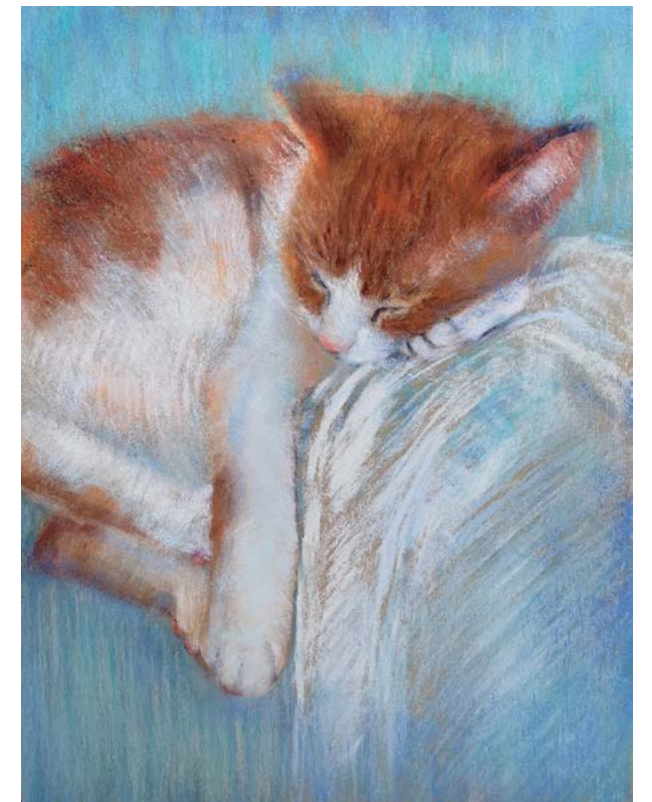
Nataliia Savostina
Prague Castle
16.5" x 11.7" | \$300



Yuliia Menailova
Ducks from the Mother's Yard
12.6" x 7.9" | \$1400



Margy West
Cows of Little Compton
9" x 11.875" | \$325



Victoria Udovikina
Cipollino
12" x 9" | NFS



Christine Obers
Neve il Gatto Bianco
8" x 6" | NFS



Christine Obers
Blue Eyes
11" x 14" | NFS



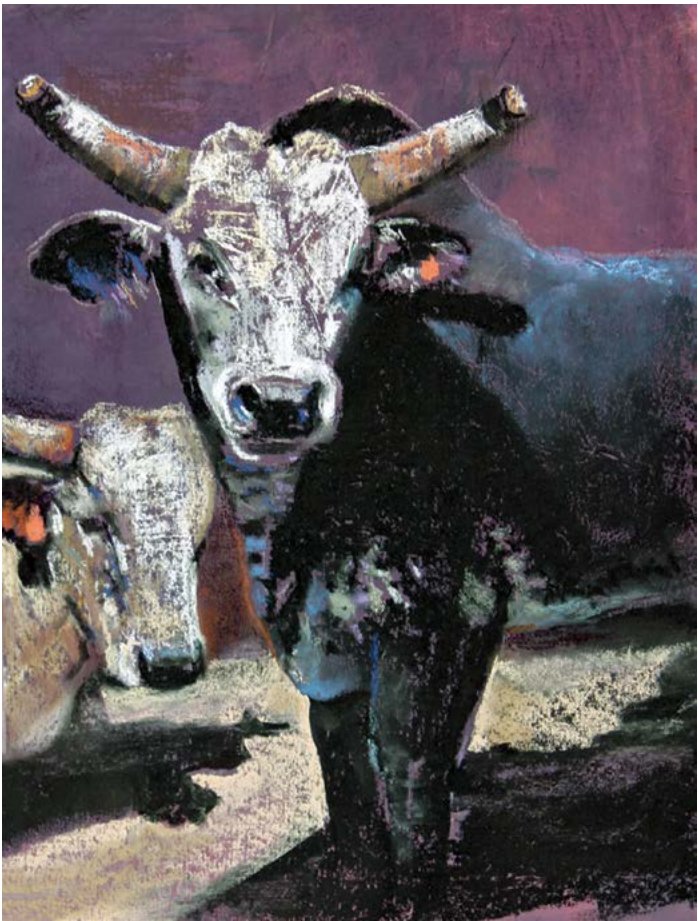
Christine Obers
Gracie
16" x 14" | NFS



Christopher Stillians
Ears To Looking At You
12" x 18" | \$800



Janis Barrett
Dane in the Hat
14" x 11" | NFS



Jan Horn
Big John
16" x 12" | \$600

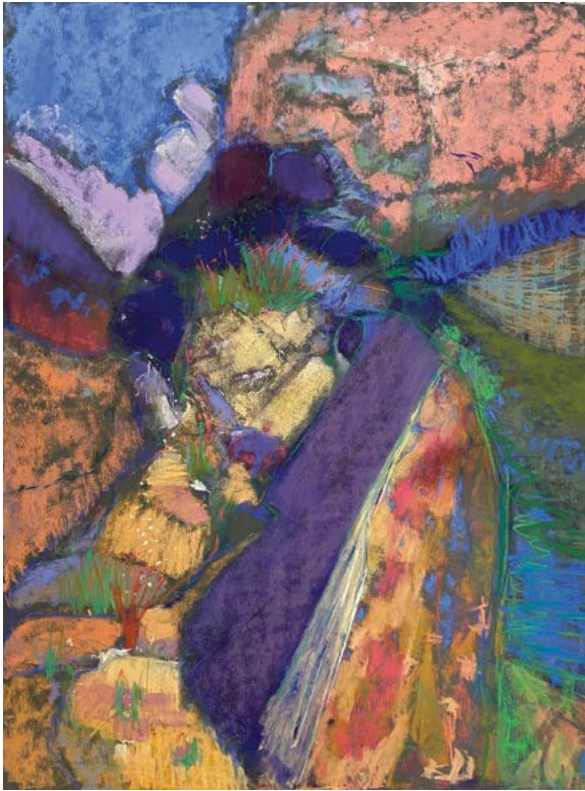


Yael Maimon
Expecting
16" x 23" | NFS



Solene Tartivelle
Walking on the Moors
9" x 12" | \$400

Nancy Komick
The Gift
26" x 20" | NFS



Nancy Komick
The Way Up
26" x 20" | NFS



Cory Goulet
Climate Change
29" x 41" | \$3200



Cory Goulet
View From Above
21" x 27" | \$1900



Cory Goulet
Abstract Sunset
11" x 14" | \$850

To purchase a painting please send an email to contact@redrockpsnv.org
with a subject line: Art purchase.
And we will put you in touch with an artist for the direct transaction.

Catalog Design: Dasha Rubakhina

Our sponsors and partners



We are thankful for all the volunteer work

Katya Zaytseva
Victoria Udovikina
Olena Nosaryeva
Christine Bowman
Alex February
Ray Mealey
Jeff Earle
Cindy Gillett
Dasha Jamison

And all the Red Rock members

Special thank you goes to Joe Baker and ShowSubmit.com

© Red Rock Pastel Society of Nevada
www.redrockpsnv.org

On the cover: "On the kitchen shelf" Irina Klimova