

RED ROCK PASTEL SOCIETY 2021 Juried Member Webshow



The Catalog
Spring 2021





RED ROCK PASTEL SOCIETY 2021

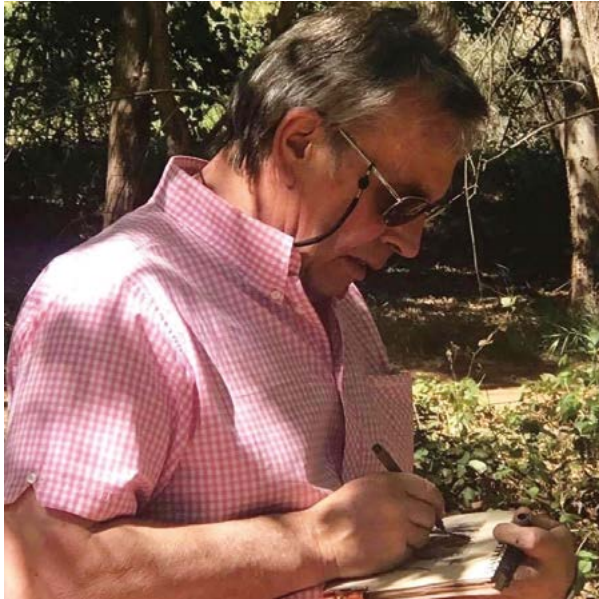
Juried Member Webshow

The Red Rock Pastel Society of Nevada was founded in 2018 by Dasha Jamison who moved from the Smoky Mountains of Tennessee to the Red Rock Area of Las Vegas, Nevada.

From a small group of pastel enthusiasts Red Rock grew into a vibrant international society that is relentlessly promoting the medium of soft pastel in southern Nevada and beyond.

This is the third full international exhibition of the Red Rock Pastel Society and this year we have a melting pot of entries again from all over the US and the entire World: Australia, Belgium, Canada, Czech Republic, England, Finland, France, Russia, Singapore, Spain, Switzerland, South Africa and Ukraine.

To all courageous pastel artists, who continued to share their love to a fine medium of pastel with the world in spite of the events of Spring 2021



JUDGE OF AWARDS

TONY ALLAIN PS. PSA. ARSMA. MC/IAPS.
MPANZ

Award winning painter, instructor and author Tony Allain has been painting for over 40 years. A self-taught painter of colour, light and movement with a complete understanding of his surroundings. Born and raised on Guernsey in the Channel Islands he moved to paint and live in Cornwall, UK to capture the unique clarity of light living on the peninsular of the West Country. Tony has exhibited extensively over the years, his work can be found in many leading galleries as well as private and corporate collections worldwide, including the Maritime Museum, Guernsey and Queen Mary 2, Cunard Ocean Liner. He has exhibited with The Pastel Society of America in New York, the Royal Society of Marine Artists, London, The International Pastel Exhibition, Suzhou, China and the Pastel Society, Mall Galleries, London. A move to New Zealand in 2006 proved to be a turning point in his career with the acceptance as a Master of the Pastel Artists of New Zealand.

His work is regularly featured in The Artist Magazine, the Pastel Journal and the Practique des Arts.

He is a member of The Pastel Society, London, UK.

Associate member of The Royal Society of Marine Artists, London, UK.

A signature member of the Pastel Society of America.

A member of the Master Circle of the International Association of Pastel Societies.

A member of the Pastel Society of the West Coast.

Tony now lives and works from his studio in Scotland.

My passion will always be the landscape, it is why I became an artist. I want to share my vision of the world I see. Colour and light is my motivation for choosing a subject. The light sparkling on the water, the colour reflected in the landscape. I favour the early morning or late afternoon to capture these effects. I think an artist has to allow their surroundings to firstly reveal itself in a way that helps them share their vision with others.

The quest for perfection can bring with it fear of making mistakes and can result in a style which can seem inhibited. I am not interested in pure representation; my work is about responses to the moods and atmospheres generated by landscape, still life or interior. The most precious thing we artist have is our visual language.

THE AWARD WINNING PAINTINGS

Revelation—paintings in which an artist reveals a part of their own world to the viewer, something that made the artist think “wow” I’ve got to paint that.

Communication—a successful painting will communicate that same “wow” factor to the viewer.

Celebration—through the use of values, color, perspective a painting that is composed in a way that draws the viewer in and (in essence) successfully “celebrates” the beauty of the person, place, or thing (or simply a mood) that is the subject matter.

*Three very distinct ingredients to a successful and potential
award-winning painting
by Tony Allain*



BEST IN SHOW
JUDGE'S STATEMENT

Sergey Bakin
Ballet 2

When I first saw this image, I thought wow that's a great, great piece of pastel work. It's again very simple, very loose, and very honest. I kept going back to it and it started to sink into me that this is so classic of Rembrandt, his etchings, his color, his drawings and I just thought wow this is really something else. The two figures. Look at the figure looking up at the other figure there, the ballerina there with her pointed toe coming up. I mean the whole painting, you could spend hours and hours looking at every single mark. How beautiful a painting it is to observe. Those lost and found edges and almost a monochromatic painting just a little bit of color helps to lift it onto another level. I think it deserves to be Best In Show. Well done.



I PLACE
JUDGE'S STATEMENT

Olga Abramova
Under the Mango Tree

A big painting, actually a fairly big piece in a square format. The subject matter and the composition is quite unique. Let's look at it. We have a landscape with the trees and foliage in the background with that light bursting through. We've got a still life with this wonderful composition of these glasses with mango juice (I guess they are mango juice, it could even be champagne, who knows). But we've got a wonderful still life, so much different from the typical vase of flowers or grapes hanging over a silver chalice. This is a still life with a different composition. And then we've got those shadows that are created by the low light when looking contra-jour (looking into the light, backlit). I do a lot of contra-jour work and to me this piece again speaks of good observation and good mark making. I love the washes and the glazing of colors that go one on top of the other. There could be some acrylic underpainting or watercolor underpainting, I'm not sure. But there's really some nice mark making and to me it was just worthy of that position. I mean, look at the mango juice or champagne. I want to drink one of those... you can just imagine picking up the glass with a little bit of ice on it...it's fabulous. Well done.



II PLACE
JUDGE'S STATEMENT

Linda Mutti
More Mesa Treasure

I've chosen something completely different here. It's more than just a landscape. Look at the correct positioning and the pitching of the values. We all can agree values are probably the most important part of picture making. Squint at it to notice how it really invites me in to walk down that path and into the shade or shadow of other trees, walking towards that patch of sunlight on the path that has been picked up by the setting sun. And the most amazing colors and description of the trees. The observation of all of the foliage in the whole painting is quite sublime. And that takes you onto the third stage of the painting, which is the background. Again, there's a whole bunch of foliage there and then the hills in the far distance, and the rendering of the sky with the lovely peach color blending up into a pale blue turquoise. The whole painting hits you with the warmth of a summer's evening walk. Dotted in the foreground are the slight indications of flowers or blooms in shade. There's gray green grasses with a touch of pink there as the sun hits it. The whole painting speaks of class and skill. That's the sort of painting I could quite easily have in my studio and look at it on a daily basis. The whole scene was observed by the artist and captured perfectly. I can actually feel myself walking down the little path.



III PLACE
JUDGE'S STATEMENT

Anastasia Vostretsova
Young Ballerina

When I first saw this painting I thought about Spanish artist Vicente Romero Redondo. But look at the delicacy of the tutu (I guess you call it a tutu, a ballerina's dress?). Absolutely gorgeous the way that flimsy material is so transparent and translucent. This young girl holding her ballet shoes, just look at the portrait. It's a portrait, figurative work, landscape... Degas gone bonkers. It's absolutely wonderful. The beautiful drape of the curtains on the left hand side, again is so translucent and transparent. It tells of a snapshot in time. It's just a beautiful beautiful painting.



HONORABLE MENTION
JUDGE'S STATEMENT

Marla Baggetta
Morning Jaunt

When I opened up the image with Morning Jaunt, honestly, it made me happy! There's chickens not far from where I live. And when I'm out walking my dog these darn chickens are squawking around the pen every single morning. I looked at the cock bird and the hens and I thought of this painting and I have to say Marla you really, really got the subject down to a tea. It's like a ministry of silly walks like it's on a goose march. This chicken here doing a goose march, I thought it was just great. It just brought a smile and a bit of joy to my face and it made me feel happy! I think works of art should be able to speak in such a way. Normally works of art are moody or atmospheric or they have a deep story to tell. But this one just tells you "it's a happy day, look I'm out for a morning jaunt". I just loved it. I loved the colors that she used in the tail feathers the bright turquoise, the ochres, and the reds. And the facial features, I went in really close on the hen's facial features, the cone (I think you call it the cone) and the little spot for the eye, it's just a great little piece of work and it's worthy of an Honorable Mention in my world anyway.



HONORABLE MENTION
JUDGE'S STATEMENT

Jill Glassman
Tattered But Not Torn

You know we've somehow sort of hit the mark last year (the COVID year). A lot of sunflowers and still lifes have been painted. But on this one, every single mark is in the right place. It's beautifully painted. Again it's very free, very expressive, very sure, and very confident. I looked at some of the leaves sort of drooping down, desperately needing water, this plant. You can feel the droopiness of the leaves and the petals of the sunflowers. The background is just a simple sort of cream background, but I love the diagonal strokes. All the mark making is really really quite expressive. Again a very simple subject but beautifully handled. I can't remember the size, but it's what's in the painting that counts.



HONORABLE MENTION
JUDGE'S STATEMENT

Irina Klimova

February. The Beginning of the Thaw

This is quite amazing. It's a style I hadn't seen before, its European I guess. The mark making is very appealing to me. Confident and sure mark making. The aerial perspective going all the way back in the distance and the values that have been set. I love the warmth and heat coming from the cabin. I'm squinting now looking at the painting again and what it does is help me pick out all the details I really want to see. The tree trunks on the righthand just loosely indicated, the foreground grasses, the big clump of deep purple, always balancing with the trees in the back. Great composition.

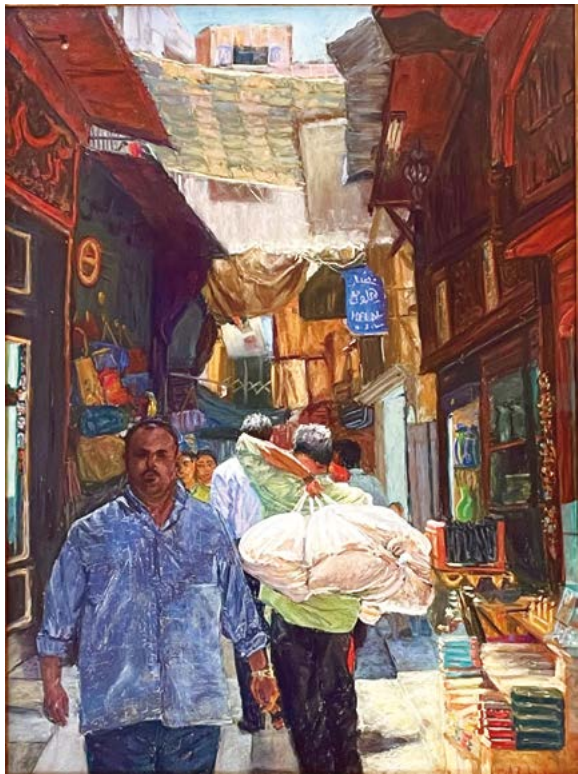


HONORABLE MENTION
JUDGE'S STATEMENT

Sergey Pietila

Portrait of a Girl in a Black Beret

This portrait is a very simple subject but has a really, really powerful facial profile. It reminds me of the Newlyn School of Art at the turn of the century. The handling of the facial features and (as I squint), the shadow on one side of the face and the highlight of light coming through on the neck just under the chin and the loosely painted tunic, and the black beret (which has just three values in it), are really, really nice to see. The light shining on the subject and the simple background, it's a really powerful portrait. Bearing in mind there were lots of other portraits to choose from but this one really grabbed my attention.



HONORABLE MENTION
JUDGE'S STATEMENT

Christie Robinson
Khan al Khalili-Delivering Fresh Bread

First of all there's a lot to take in. This is one of the paintings in the whole exhibition where there was an awful lot of work that's gone into it. Look at the guy walking towards us in the blue shirt. I've got a feeling I know this guy. That's not just a figure, it's a portrait of a real man. A real guy. I guess, Khan al Khalili is the guy carrying the bread over his shoulder. When I look at the paraphernalia there and the markings, the deep reds, the tapestry work, and all the way up to the lovely translucent fabrics. The entire perspective is really really good. There's an awful lot here telling a story. I've never been to that part of the world. One of these years when we're all free to travel I'd love to go to the Cairo markets. It's a confident piece of work and great observation.



DARIUS MEMORIAL AWARD
SPONSORED BY COSETTE KOSIBA

Tara Will
Essence of Zion

What can I say, it's vibrant, powerful, and lively. I actually haven't been to Zion but I've been to quite a few of the National Parks there (in the US). The juicy colors and abbreviated notes of foliage and textures all over the mountain, it really grabs you. I can't remember what size it was but knowing Tara its probably the size of a large house. I think it's really gorgeous. It's fresh, it's clean and it's really very spontaneous. The way it's been painted shows a sure and confident hand in mark making. We're getting to see Tara's work now in a big format and she's a bit of a pioneer in this pastel department I think. She's a name that's going to go down in years to come. I love the piece. It's vibrant, it's fresh it's the ultimate in pastel mark making for me and that's why I thought it was worthy of this award. Well done.



SENIOR-JUROR

Karen Margulis PSA, IAPS-MC

Karen Margulis was born in Connecticut and was raised in South Florida. She currently lives in Marietta, Georgia. Karen received her BA in Education from the University of Florida. Karen’s primary medium is pastel, although she enjoys all mediums. She is a Master Circle recipient of the International Association of Pastel Societies and a Signature Member of the Pastel Society of America. She is also a Member of Excellence in the Southeastern Pastel Society. Her landscape and wildflower paintings have received recognition in many International exhibitions including PSA and IAPS where her Queen Anne’s Lace painting won the 2011 poster competition. Karen’s work has been featured in the June 2014 issue of Pastel Journal. Her painting,

Summer Reprise, was chosen for the cover image. Karen is a Daily Painter and art blogger. She teaches workshops and classes throughout the Southeast and online. Karen’s passion for art education is expressed on her art blog, Painting My World, where she shares art tips and and inspiration every day.



David Brammeld
Winter Hedgegrow

KAREN MARGULIS'S CHOICE



JUROR
Corey Pitkin PSA, IAPS/MC

A predominantly self-taught artist, Pitkin's award winning work has been featured in The Pastel Journal, Art Renewal Center, Portrait Society of America, Pratique des Arts Magazine, and International Artist Magazine, and is held in collections across the world. He is a Signature Member of the Pastel Society of America and has achieved Master Circle status with the International Association of Pastel Societies. Pitkin teaches frequently in his local art community and regularly travels for workshops. He currently resides in upstate New York with his wife Esther and children Anastasia and Xavier.



Margaret Larlham
Glimmer

COREY PITKIN'S CHOICE



JUROR

Lana Ballot, PSA, IAPS/MC

Lana Ballot is a professional artist and pastel painting instructor, living on Long Island, NY.

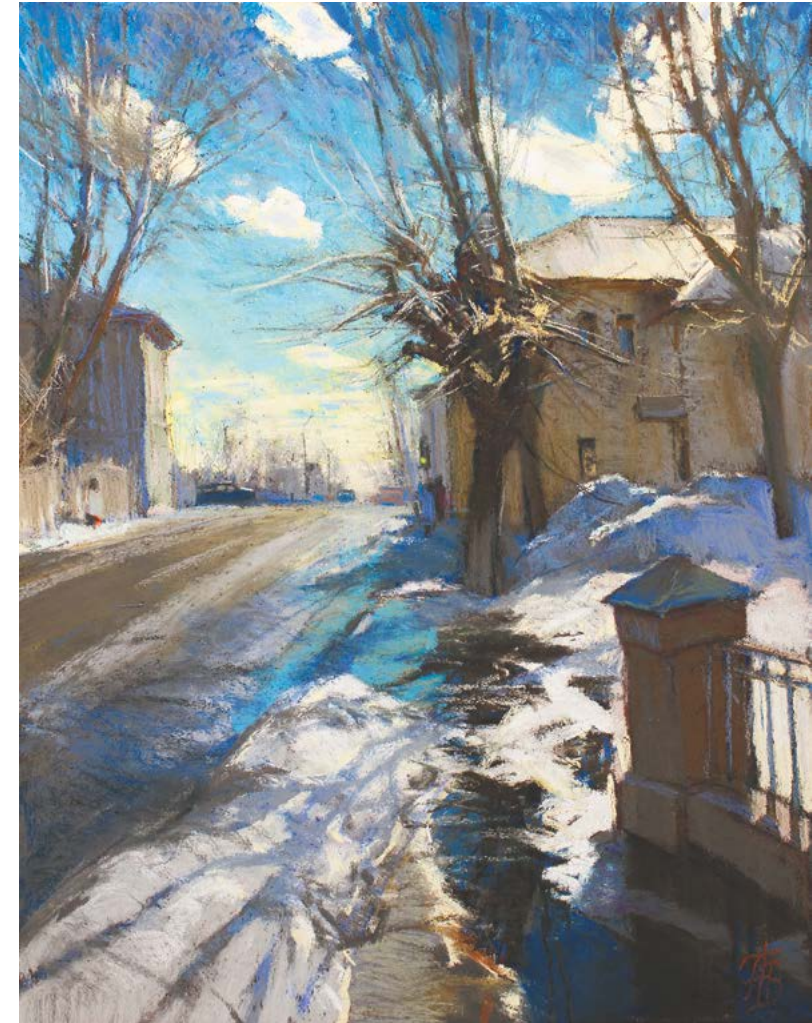
In addition to her local Plein air and studio classes, she travels to teach pastel workshops throughout the United States and internationally. Recently she has been teaching online classes and workshops.

Lana Ballot is a Signature Member of the Pastel Society of America, a member of the IAPS Master Circle and a Signature Member of the American Society of Marine Artists. Confident and expressive use of color and painterly mark making are characteristic of Lana's work.

Lana has been exhibiting and won awards in National and International Juried competitions, including the Pastel Society of America's annual show Enduring Brilliance and the prestigious Pastel Journal's Pastel

100 competition. In 2017 and 2020, French magazine Pratique des Arts featured Lana's coastal work in its Pastel issues. In 2019, Lana was one of the artists invited to exhibit work during the Artlife International Contemporary Art Festival in Moscow. In 2022, Lana will be part of the group of American Women Artists working in pastels, invited to exhibit in the international show Pastels of the World in Bourbonnais, Montluçon, France.

To see Lana Ballot's work and the current teaching schedule please visit lanaballot.com



Vladislav Tatarinov

Sun of March

LANA BALLOT'S CHOICE



Yael Maimon
Dinner Leftovers

VIEWER'S CHOICE



Gina Carstens
Joie de Vivre

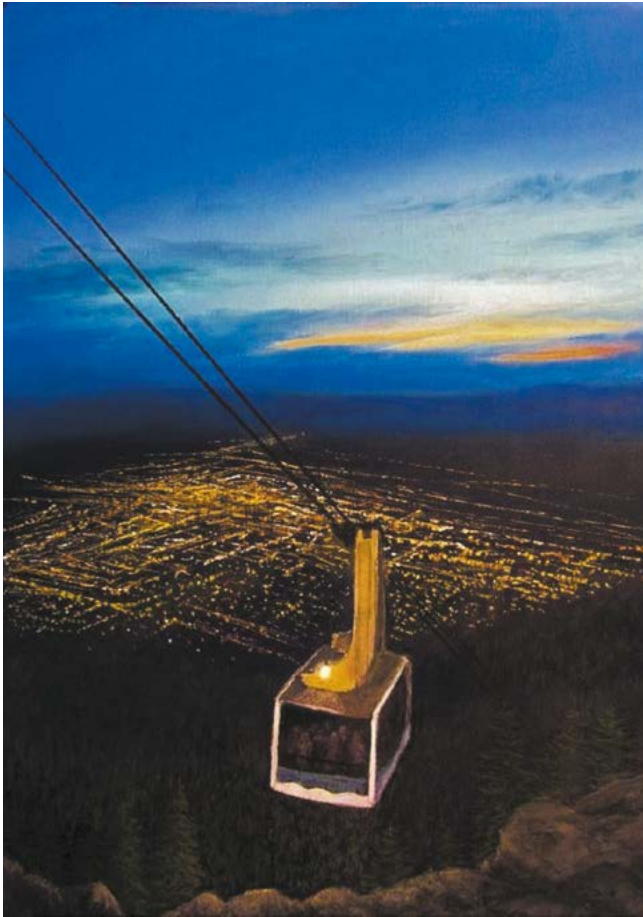
**VIEWER'S CHOICE
RUNNER-UP**



Alpha Voyage Gallery is a contemporary gallery in the heart of Las Vegas. Founded by Jeffrey Skalny, the gallery is elevated by his tech background and transformed into an immersive art experience. The gallery features Las Vegas, US, and International based artists.

This year Red Rock Pastel Society and Alpha Voyage Gallery collaborated on the 2021 Red Rock Juried Member Webshow. As part of the collaboration, all available pieces accepted to the show are available for purchase from the Alpha Voyage website.

[privatetechgroup.com/
collections/red-rock-pastel-society-of-nevada-webshow-2021](https://privatetechgroup.com/collections/red-rock-pastel-society-of-nevada-webshow-2021)



**ALPHA VOYAGE
HONORABLE MENTION**

Helen Mathysen-Dobbins
Up the Sandia

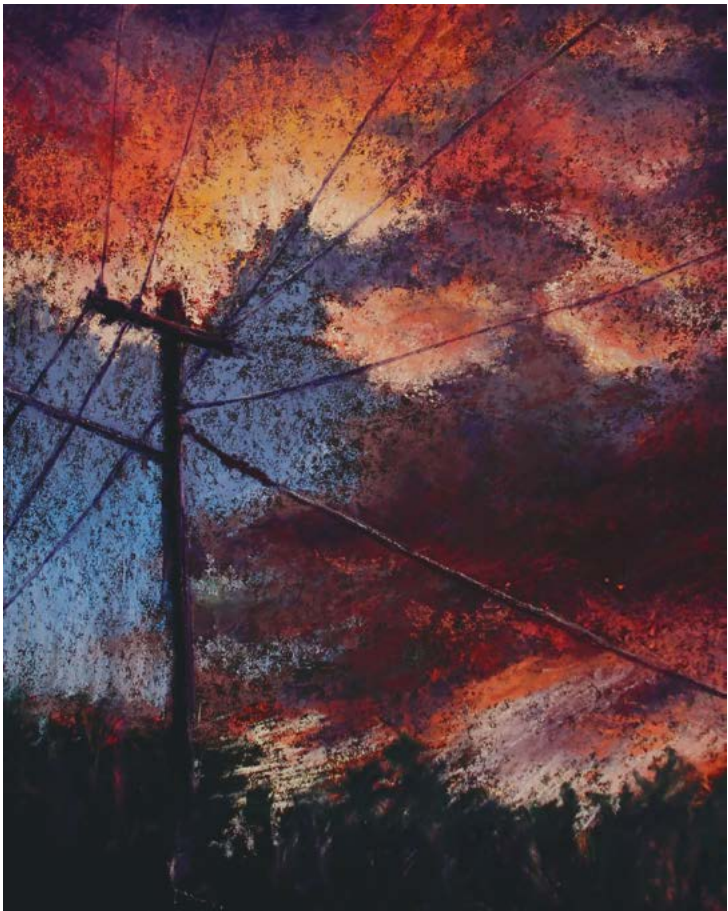
This one was a favorite among many of our staff. There was just something that spoke to a few of the people here and it came away with the most points from our process. So that is the one we have chosen. It is an amazing piece of work.



**ALPHA VOYAGE
HONORABLE MENTION**

Janis Barrett
Besties

This one connected with one of our staff extremely well. In the gallery setting, anything with pets hits that emotional nerve and makes it an easy purchase. So it was an easy Honorable Mention for us. It was so well done.



**ALPHA VOYAGE
HONORABLE MENTION**

Olena Nosaryeva
Power Point

This piece was really interesting. It drew us in. It's a little bit of a darker piece but we found ourselves staring at it for a long time and getting lost in it. It really spoke to us. We couldn't stop with just one award so we decided to give some Honorable Mentions to a few people whose work really drew us in. We're going to see if we can't put together a show with all our Honorable Mentions.



ALPHA VOYAGE
HONORABLE MENTION

Solene Tartivelle
Faraway Lands

There were a few abstracts that really caught my attention. I love the abstracts and I had just not seen an abstract done with pastels as well as some of the abstracts done here. This is the one I focused in on most. I had to do something for an abstract because they work so well in homes that people are trying to decorate. It's very easy to match abstracts with decor and they're just so interesting. You can get lost in something like this for a long time, every day finding something new in it. That's why we put an abstract in there as well.

THE SHOW

Check out all these marvelous works that made it to the show.
Congratulations to the 2021 Red Rock Member Juried Show
Award Winners!

Judge: Tony Allain PS, PS, ARSMA, MC/IAPS, MPANZ

Senior-Juror: Karen Margulis PSA, IAPS-MC

Juror: Corey Pitkin PSA, IAPS/MC

Juror: Lana Ballot, PSA, IAPS/MC



Sergey Bakin
Ballet 2
23.6 x 27.5 | \$2500

Sergey Bakin
Ballet 1
27.5 x 19.6 | \$1100



Sergey Bakin
Ballet 4
19.6 x 27.5 | \$1750



Anastasia Vostretsova
Young Ballerina
25 x 18 | NFS



Anastasia Vostretsova
Blueberry Eyes
19 x 12 | NFS



Francesco Ipsan
Blue Turban
27.5 x 19.6 | NFS



Sergey Pietila
Portrait of a Girl in a Black Beret
16 x 16 | \$2000

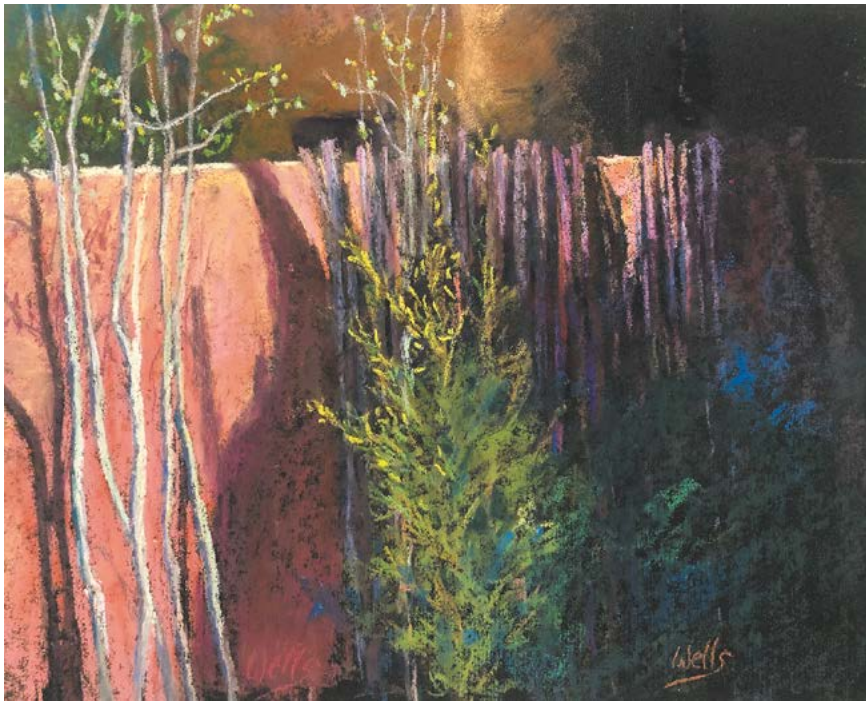
Sergey Pietila
Dryad Games
28 x 31 | \$2000



Sergey Pietila
Franois Villon
28 x 31 | \$2000



Linda Wells
Dancing Shadows
9 x 12 | \$850



Linda Wells
Aspen Saplings
11 x 14 | \$950

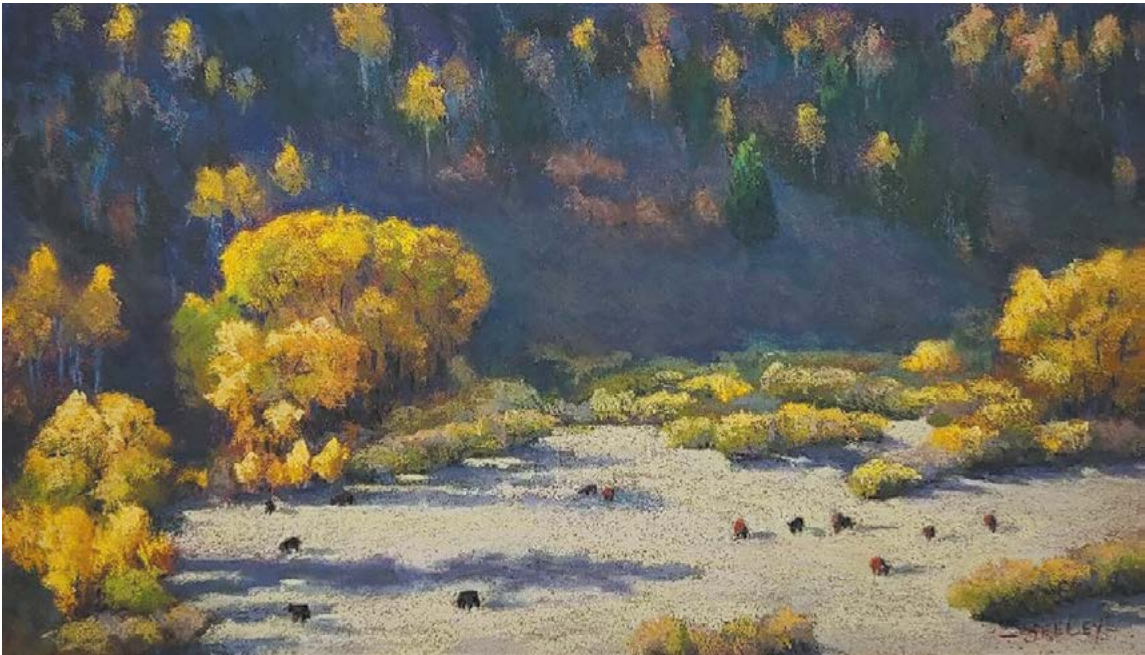
Aaron Schuerr
The Gallatin River
12 x 16 | NFS



Aaron Schuerr
The Gallatin River
12 x 16 | NFS



Michele Seeley
Watchkeepers from
a Bygone Era
11 x 14 | NFS



Michele Seeley
Grazing the Valley Floor
8 x 14 | NFS



Michele Seeley
Light at the Top of the Hill
11 x 14 | NFS



Linda Mutti
Glorious Land
12 x 20 | NFS

Linda Mutti
More Mesa Treasure
12 x 16 | NFS



Linda Mutti
Day Is Done | 9 x 12 | \$695



Kenley Osborne
Winter Sunset
12 x 16 | \$390

Vladislav Tatarinov
Sun of March
15 x 11 | \$1300



Vladislav Tatarinov
April Flood
15 x 23 | \$1400

David Brammeld
Golden Winter
12.5 x 17.7 | \$1500



David Brammeld
Winter Hedgegrow | 16.5 x 23.6 | \$2500



Anne Courtine
Sunset in London | 21.6 x 27.5 | \$2300



Anne Courtine
WESTMINSTER | 25.5 x 15.7 | \$2100



Olga Abramova
Spring Mood
19.6 x 19.6 | NFS

Olga Abramova
Under the Mango Tree
27.5 x 27.5 | NFS



Olga Abramova
White Weald
27.5 x 27.5 | \$2100



Elena Maksina
Almonds Blossoms
9 x 12 | \$350

Svetlana Kabanova
Midday
18.5 x 18.5 | NFS



Natalie Larina
Wild Poppies (Makovyj)
19 x 19 | NFS



Marz Doerflinger
Another Roadside
Attraction
8 x 8 NFS



Marz Doerflinger
The Barn at Billy Franks
4.75 x 15 | NFS

Loriann Signori
My Heart Does Flips
7 x 7 | \$900



Loriann Signori
Summer Blue
40 x 56 | \$7200



Irina Klimova
February. The Beginning of the Thaw
19 x 27 | \$800



Irina Klimova
Tulips
19 x 27 | \$1200



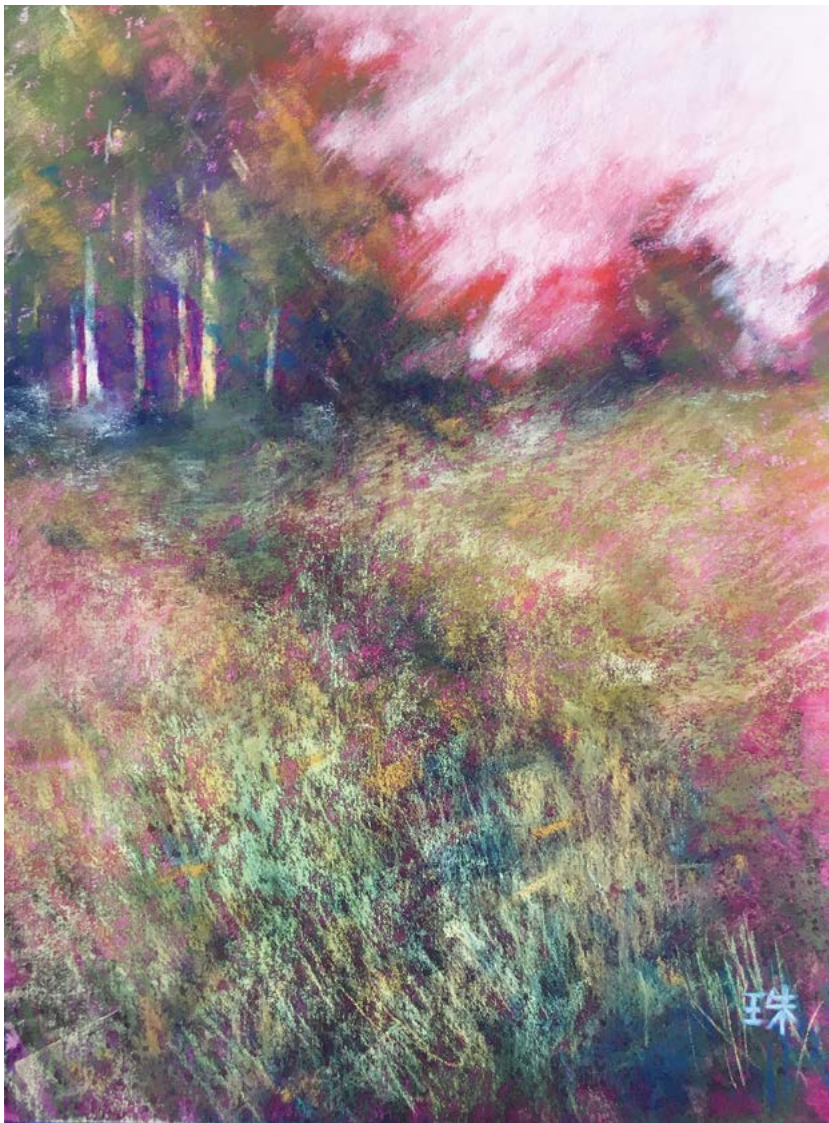
Irina Klimova
Dahlias and Rose Hips
26 x 19 | \$1000



Alejandra Gos
Dancing Shrubs
12 x 9 | NFS



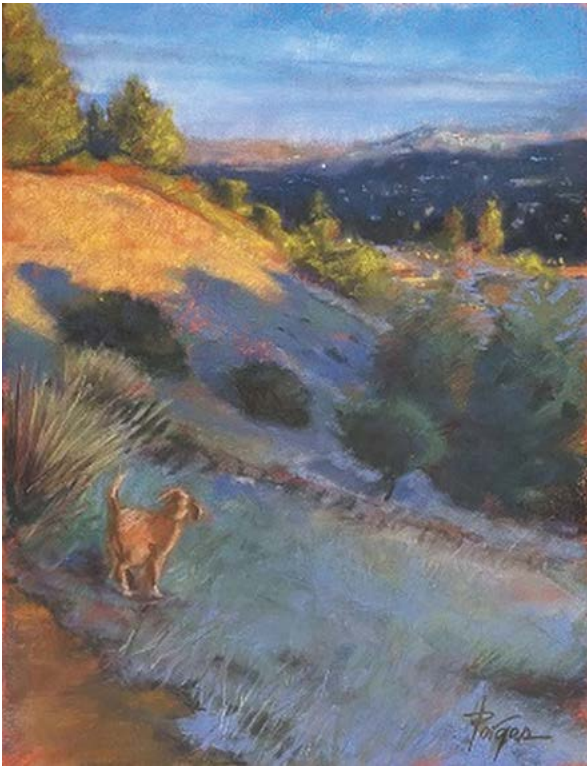
Alejandra Gos
Dreams of Hope
8.5 x 12 | NFS



Tamami Tokutake
Stay
12 x 9 | NFS

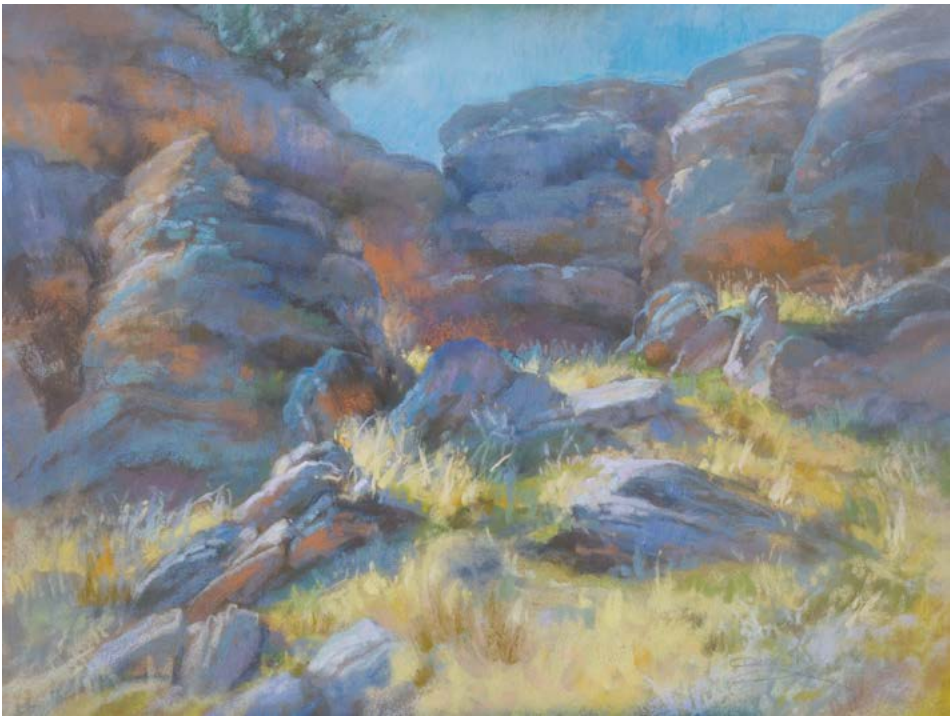


Susan Porges
Renewal
15 x 11 | \$800



Susan Porges
Zoeys World
12 x 9 | NFS

Christine Debrosky
Spring Sparkle
20 x 24 | \$2250



Christine Debrosky
Between Rocks and
a Soft Place
20 x 24 | \$2150



Sarah St George
Cold Winter Light
16 x 16 | NFS



Sarah St George
Alpine Mirror
20 x 16 | NFS



Christopher Stillians
Up and Away
18 x 24 | \$6000



Tamara Kamaeva
Spring Morning
29.5 x 22 | \$895

Helen Gromovaya
Mothers Geranium
27.6 x 23.6 | \$1000



Helen Gromovaya
Mothers Geranium
27.6 x 23.6 | \$990

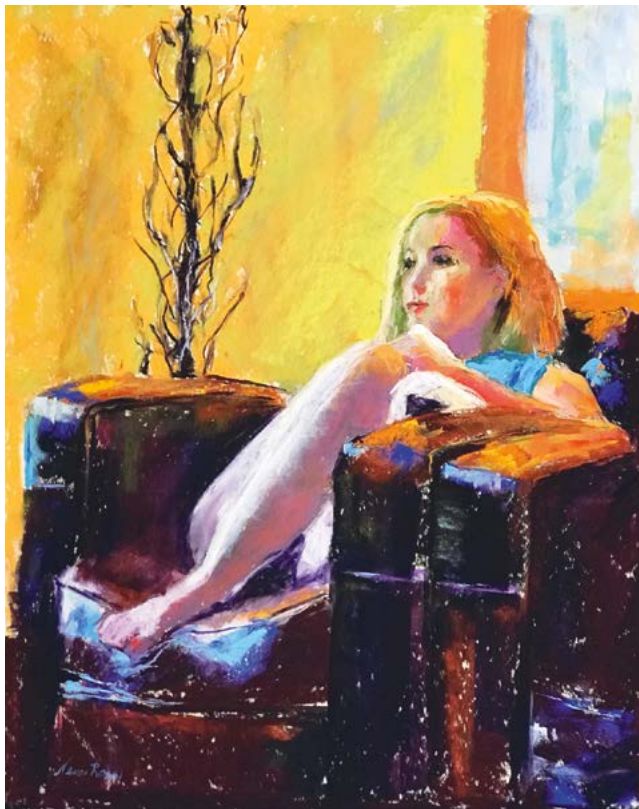


Becky Harblin
Arrange
8 x 13 | \$240

Gina Carstens
Explosion
22.4 x 6.2 | NFS



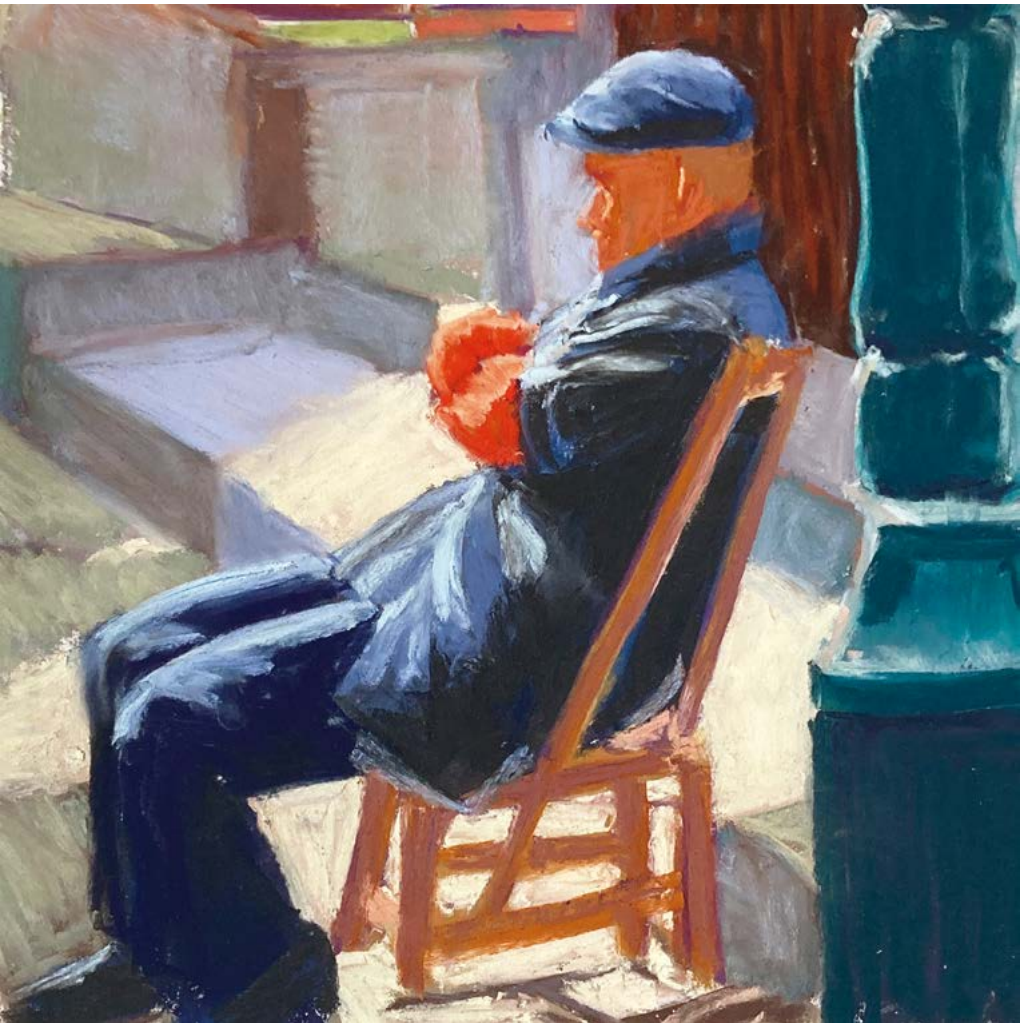
Gina Carstens
Joie de Vivre
26.3 x 19.6 | NFS



Neva Smoll
Sarah in Her Chair
20 x 16 | NFS



Neva Smoll
Cusco
14 x 11 | \$535



Mary Sexton
Sunning
9 x 9 | \$300

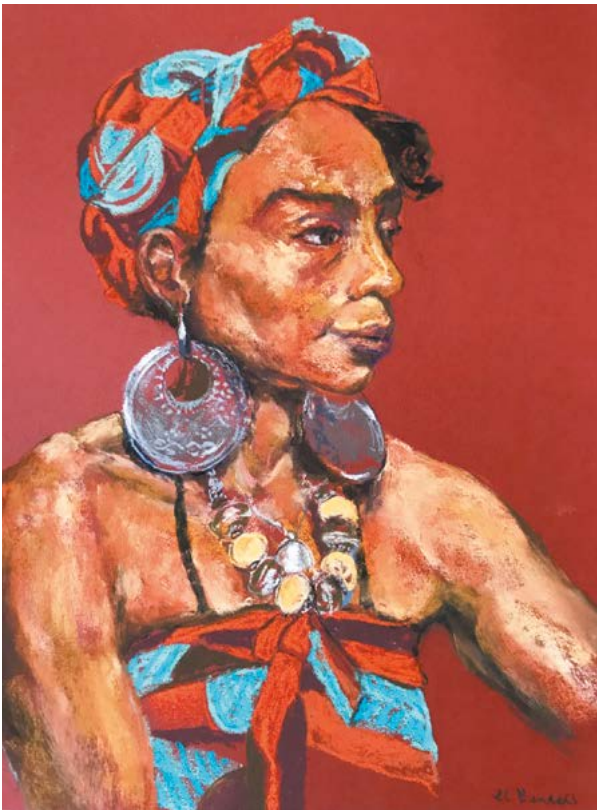


Jeri Greenberg
Sunshine in a Vase
14 x 10 | NFS

Jeri Greenberg
3 AM
16 x 20 | NFS



Jeri Greenberg
Going in Circles
16 x 14 | \$1500

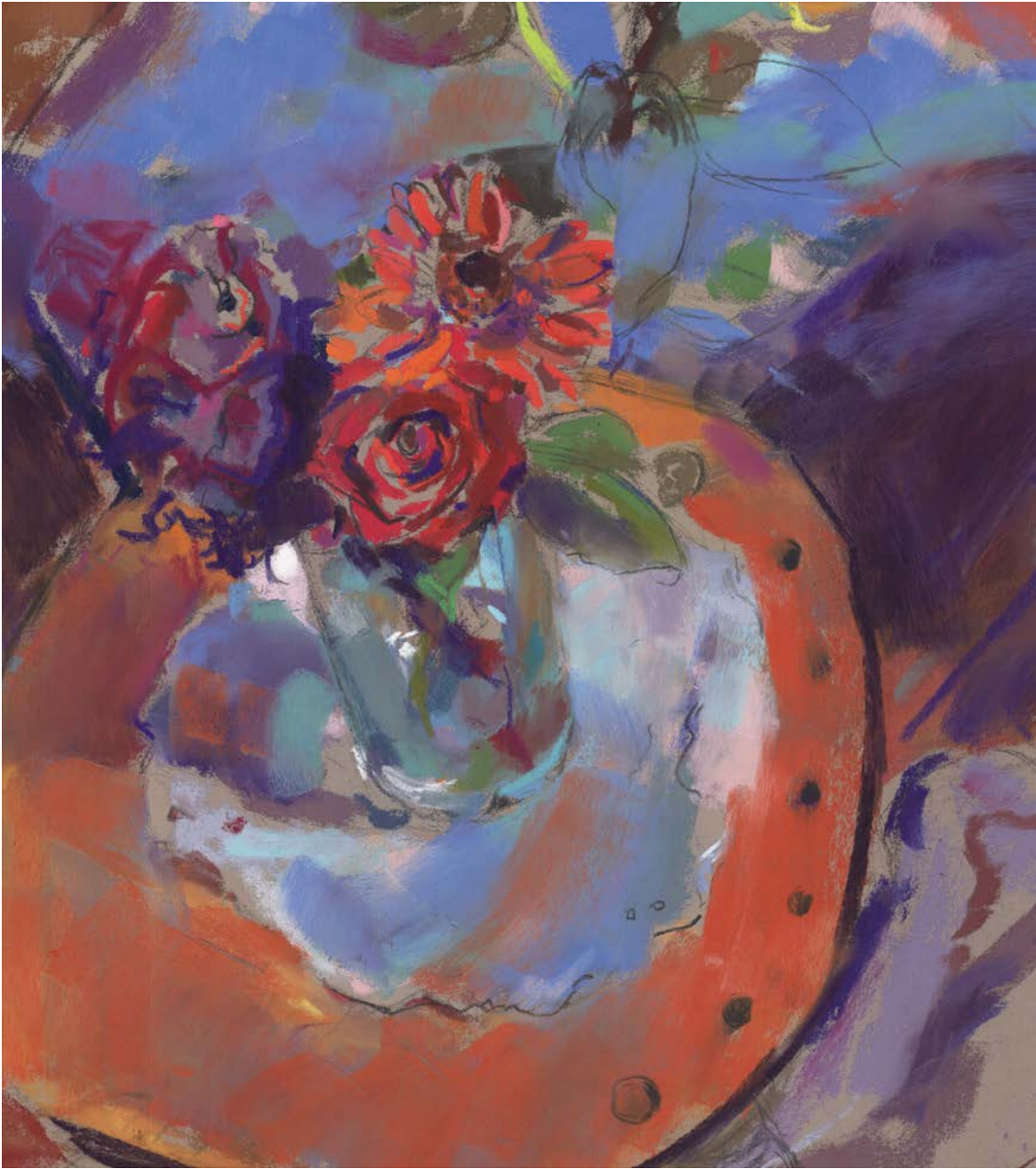


Carol L Bendell
I Am Who I Am
12 x 9 | NFS

Carol L Bendell
School Superintendent
16 x 12 | NFS



Margaret Larlham
Glimmer
18 x 12 | \$900



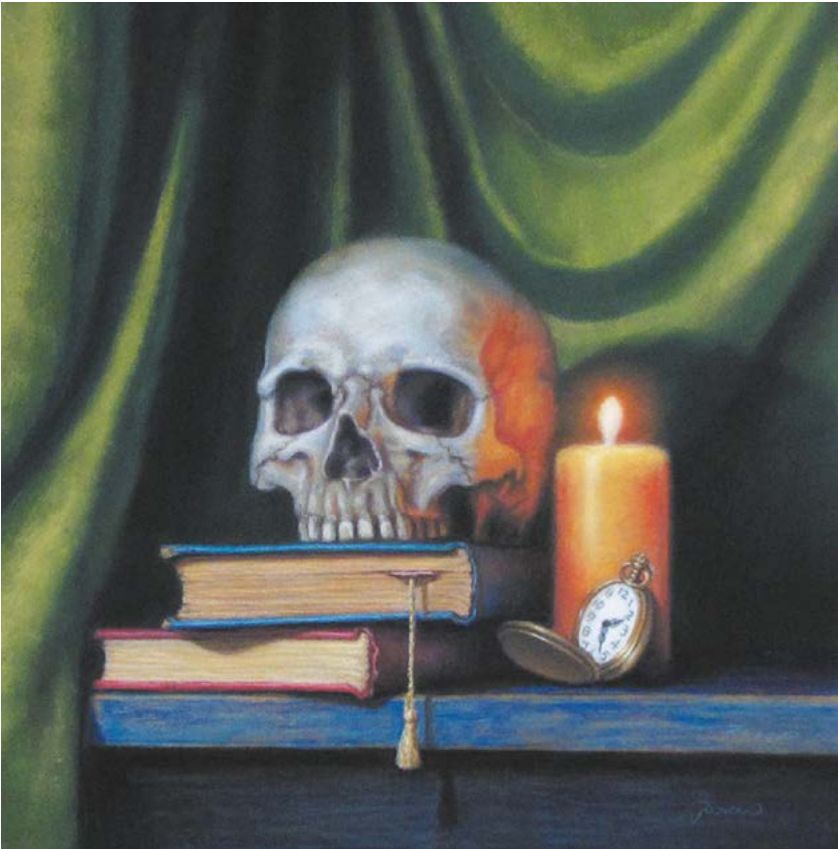
Adrian Giuliani
Floral Sonata
13 x 11 | \$1000



Adrian Giuliani
Fireworks
17 x 11 | \$600



Adrian Giuliani
Party of Eight
12 x 16 | \$800



Rita Romero
Enlightenment
12 x 12 | \$600



Cindy Gillett
Momentos
11 x 14 | \$ 675

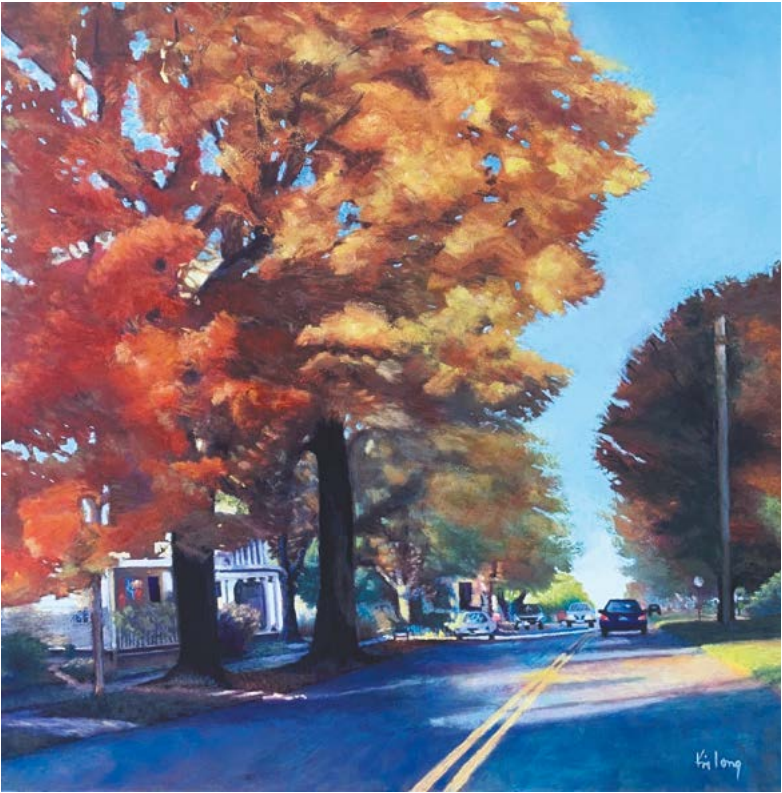


Tammy Papa
Peony Promise
15 x 15 | \$119



Wen Qi
Sunset Impression
5 x 5 | \$280

Kim Long
Main Street
16 x 16 | NFS



Tara Will
Essence of Zion
20 x 26 | NFS



Wendy McClatchy
Breath of Inspiration
16 x 20 | NFS

Leila Rostami
Harvest
11 x 14 | \$200



Lorraine Trenholm
Up from the Pond | 8 x 12 | \$450



Kathy Howard
Red Earth
12 x 12 | \$1600



Kathy Howard
End of the Line
9 x 12 | NFS



Kathy Howard
Reflections of Sandstone
12 x 16 | NFS



Jennifer Evenhus
Chance Encounter
24 x 18 | \$2400



Jennifer Evenhus
Hope Blooming
18 x 24 | \$2400



Jill Glassman
Tattered But Not Torn
16 x 20 | NFS



Diane Breuer
Montana De Oro
12 x 8 | \$900

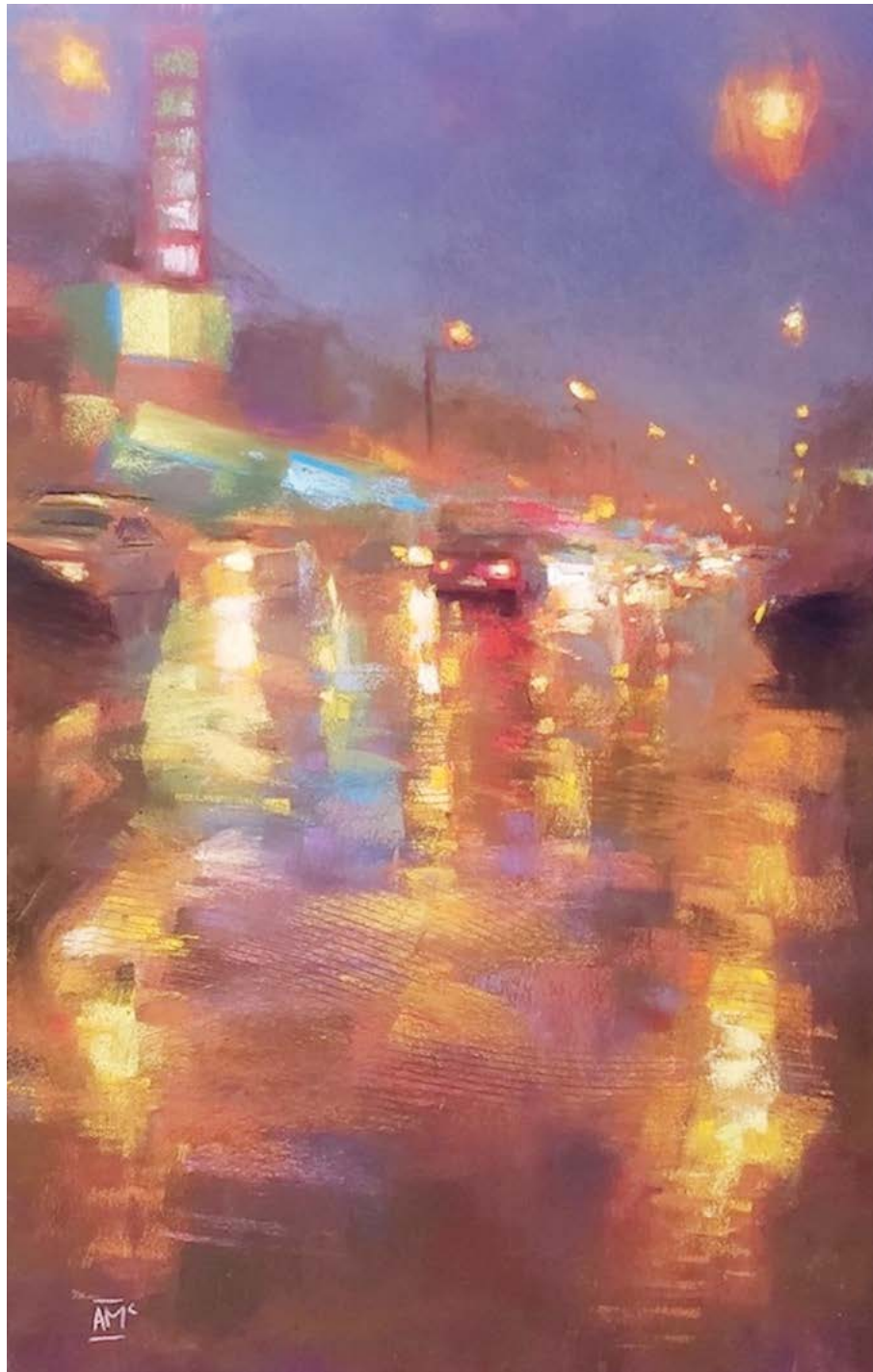
KS Denny
Morning Reflections of Eklutna
10.75 x 8.33 | \$650



Denise Schryver
Light on the Lake
Santa Rita Ranch
9 x 12 | \$700



Denise Schryver
Backlit Roses
9 x 12 | NFS



Andrew McDermott
Dunbar Night Lights
18.5 x 12 | NFS

Andrew McDermott
Lights Through The Rain
15 x 11 | NFS



Andrew McDermott
Gray Days
14.5 x 10.5 | NFS

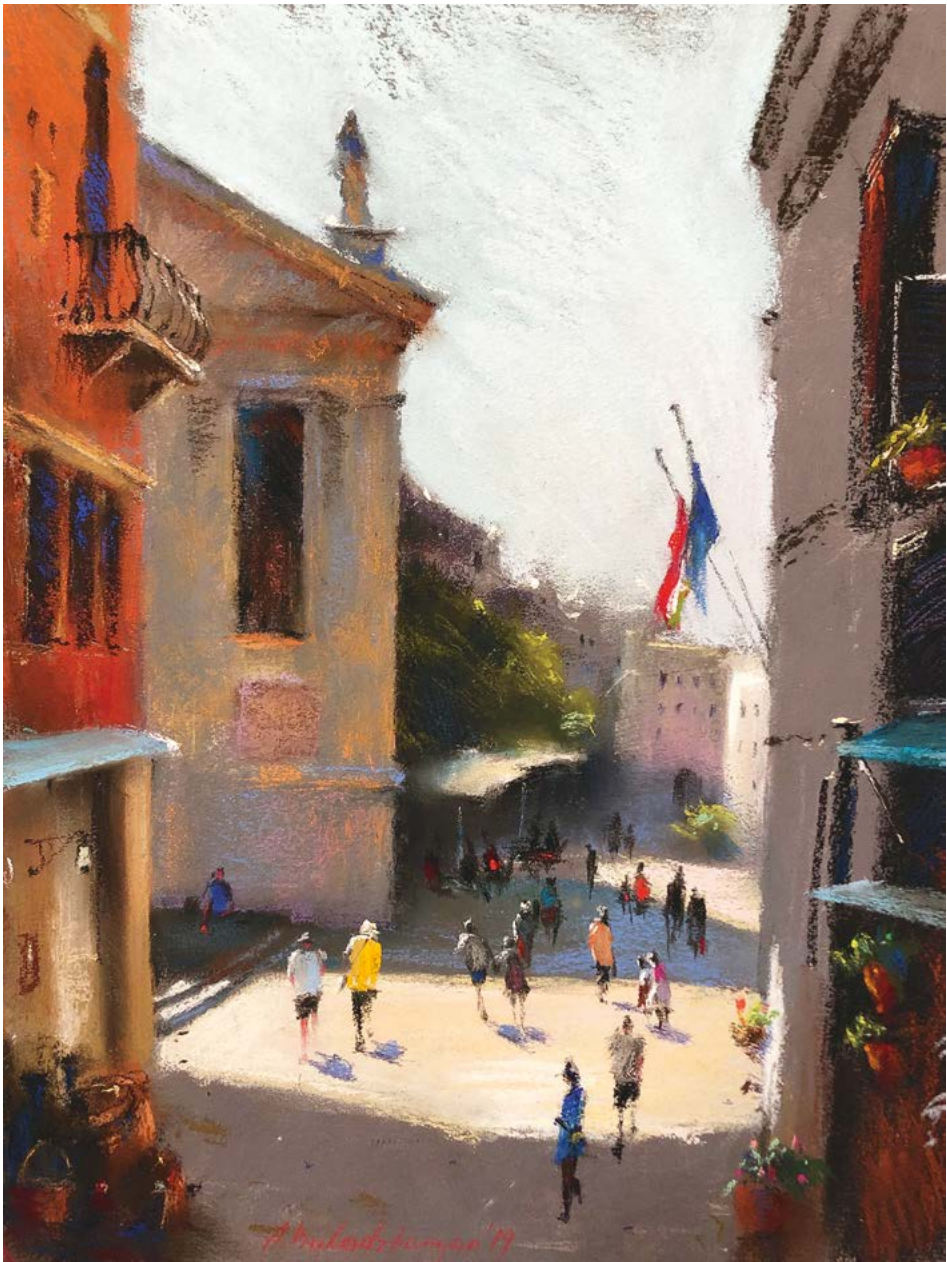




Anna Guryanova
View of St. Isaacs Cathedral
16 x 11 | \$133



Olga Andreyuk
Nightlife
11.4 x 7 | \$100



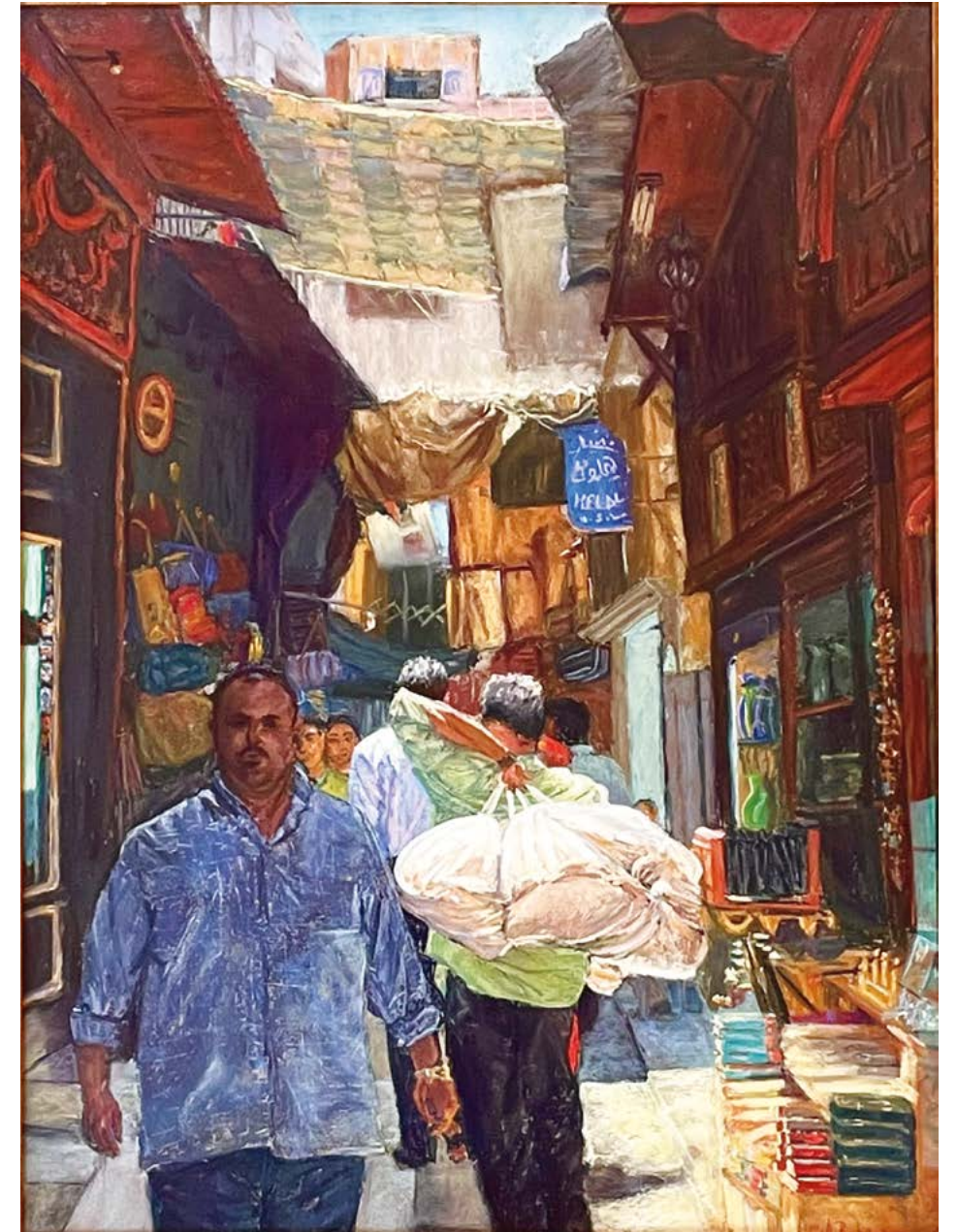
Arevik Babadzhanyan
Sunny Venice
16 x 11 | \$2000



Katya Zaytseva
Frozen City
11 x 9 | NFS



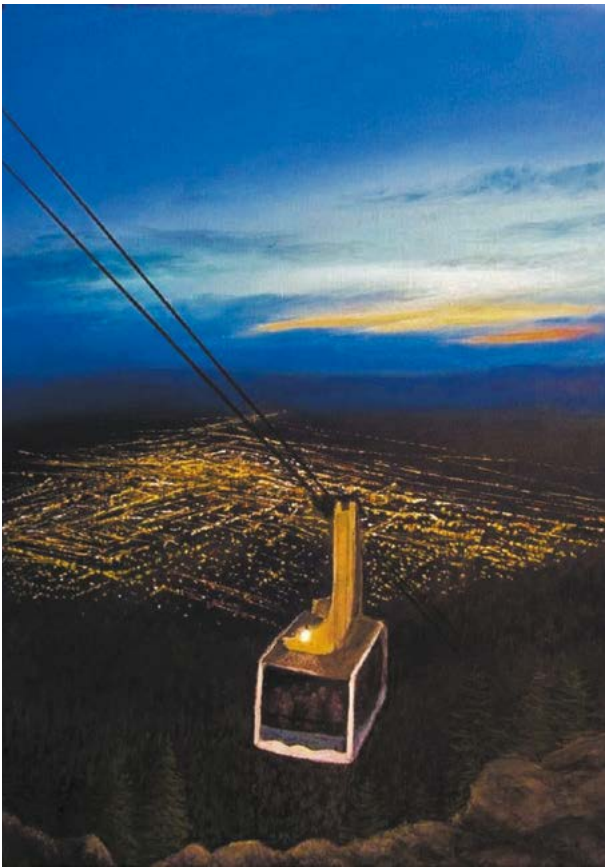
Katya Zaytseva
Miami Vibe
8 x 10 | NFS



Christie Robinson
Khan al Khalili- Delivering Fresh Bread
24 x 18 | NFS



David Gilmore
Town Center Lites
9 x 12 | NFS



Helen Mathysen-Dobbins
Up the Sandia
10 x 8 | \$350



Helen Mathysen-Dobbins
Awakening
8 x 10 | NFS



Marsha Ross-Roberts
Jaguar Repose
18 x 24 | NFS



Anna Kalugina
Night
6.3 x 9.4 | \$300

Olga Romanchikova
Out of the City
24.4 x 18.5 | \$1250



Olena Nosaryeva
Power Point
16 x 12 | \$400



Suzanne Leslie
Spring Kiss
10 x 10 | \$800



Adrienne Feldstein
Ghost Ranch Ancients
18 x 25.5 | \$1000



Diane Hine
Showers Passing by Malibu
20 x 16 | \$450



Elena Bulycheva

Bay in March
12 x 16 | NFS

Julia Doemland

Ridge Pond
11 x 14 | \$300

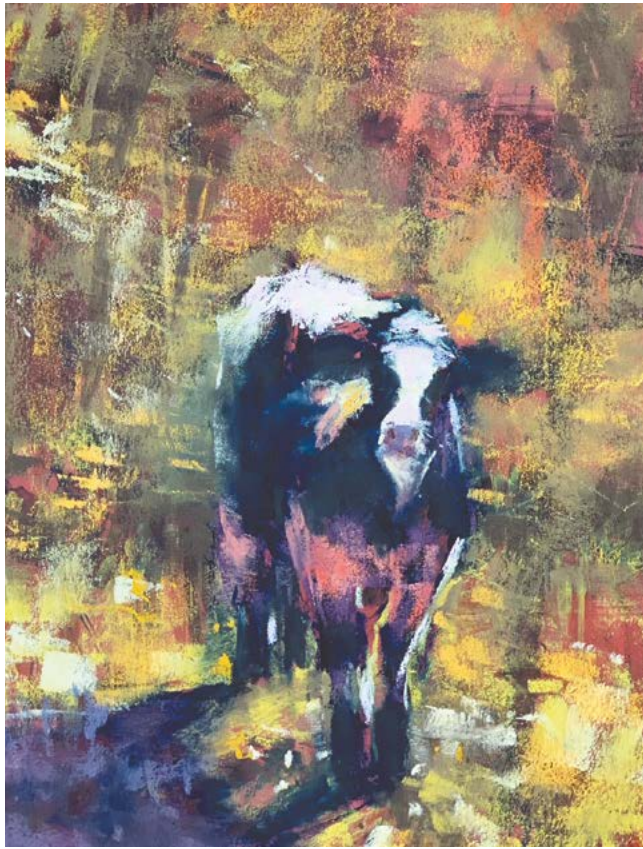


Julia Doemland

Sun Splashed
12 x 16 | \$350



Anne Gee
Big Lake Birch
10 x 8 | NFS



Anne Gee
This is Art
10 x 8 | NFS



Debi Sousa
Tuolumne Barn
8 x 12 | NFS



Debi Sousa
Ride to Summer Camp
20 x 14 | \$375



Ekaterina Rakityanskaya
No Wind
22.8 x 27.6 | \$1600

Maria Pilar Gonzalez Reyero
Standing High
24 x 16 | \$690



Maria Pilar Gonzalez Reyero
There is Always Light
19 x 19 | \$1150



Valeriya Kulikova
I'll Ride my Bike for a Long Time
27.5 x 20 | \$800



Valeriya Kulikova
Purple Mist
16 x 11 | \$450



Valeriya Kulikova
Good Day in Sochi
11x 15 | \$400



Christine Troyer
My Safe Place
8 x 8 | \$375



Christine Bowman
Modern Spring
9 x 24 | \$450



Isabelle Lim
Discovery 66
19 x 26 | \$1500



Stephie Clark
Autumn Gems
16 x 12 | NFS



Stephie Clark
Phoenix Rising
15.5 x 12 | \$650

Vera Kavura
Little Prince Passion
16 x 12 | \$400



Vera Kavura
Alchemy of Sunset
28 x 31 | \$600



Patty Rios
Mirrors Of The Soul
9 x 12 | \$400



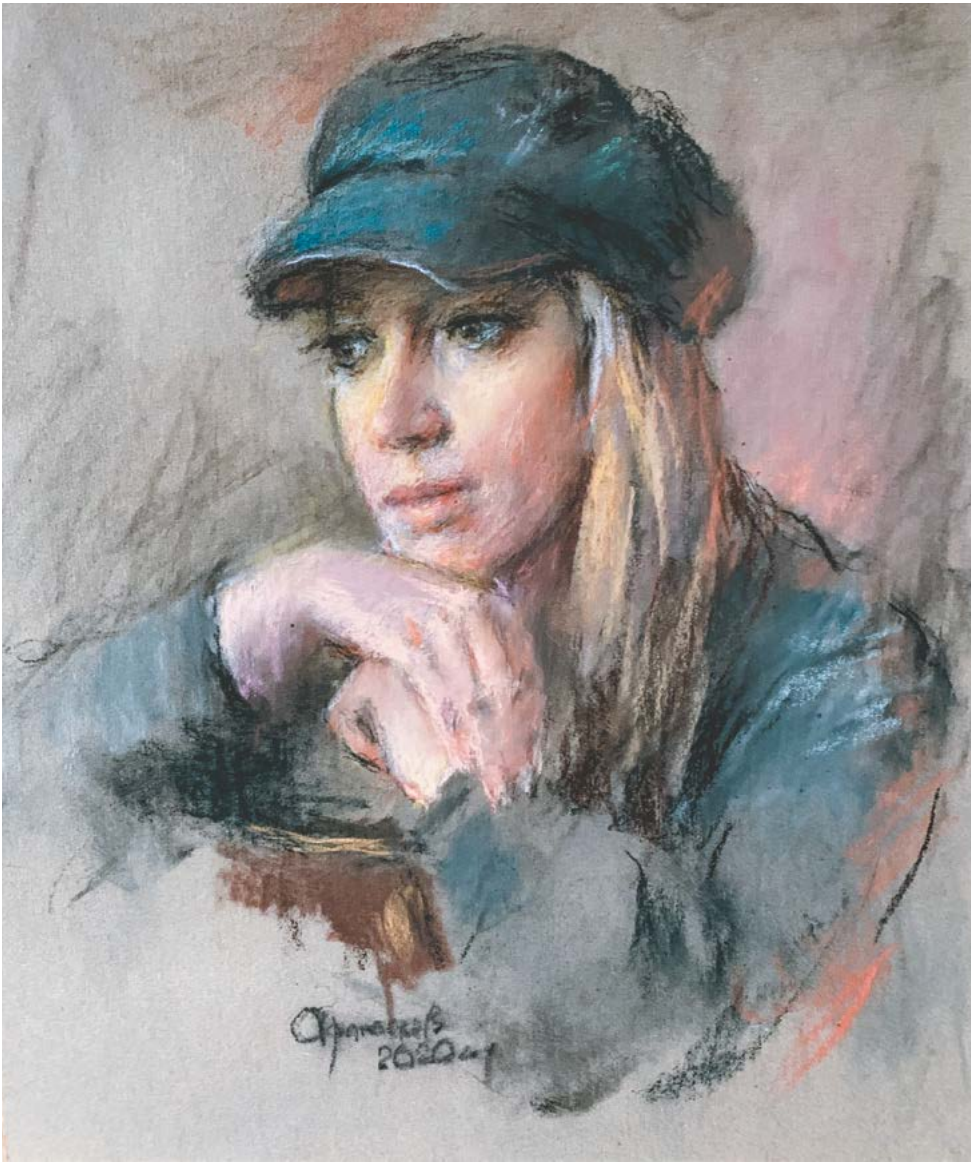
Elena Mrochkovskaya
Sunny Bunny
14 x 12 | \$350



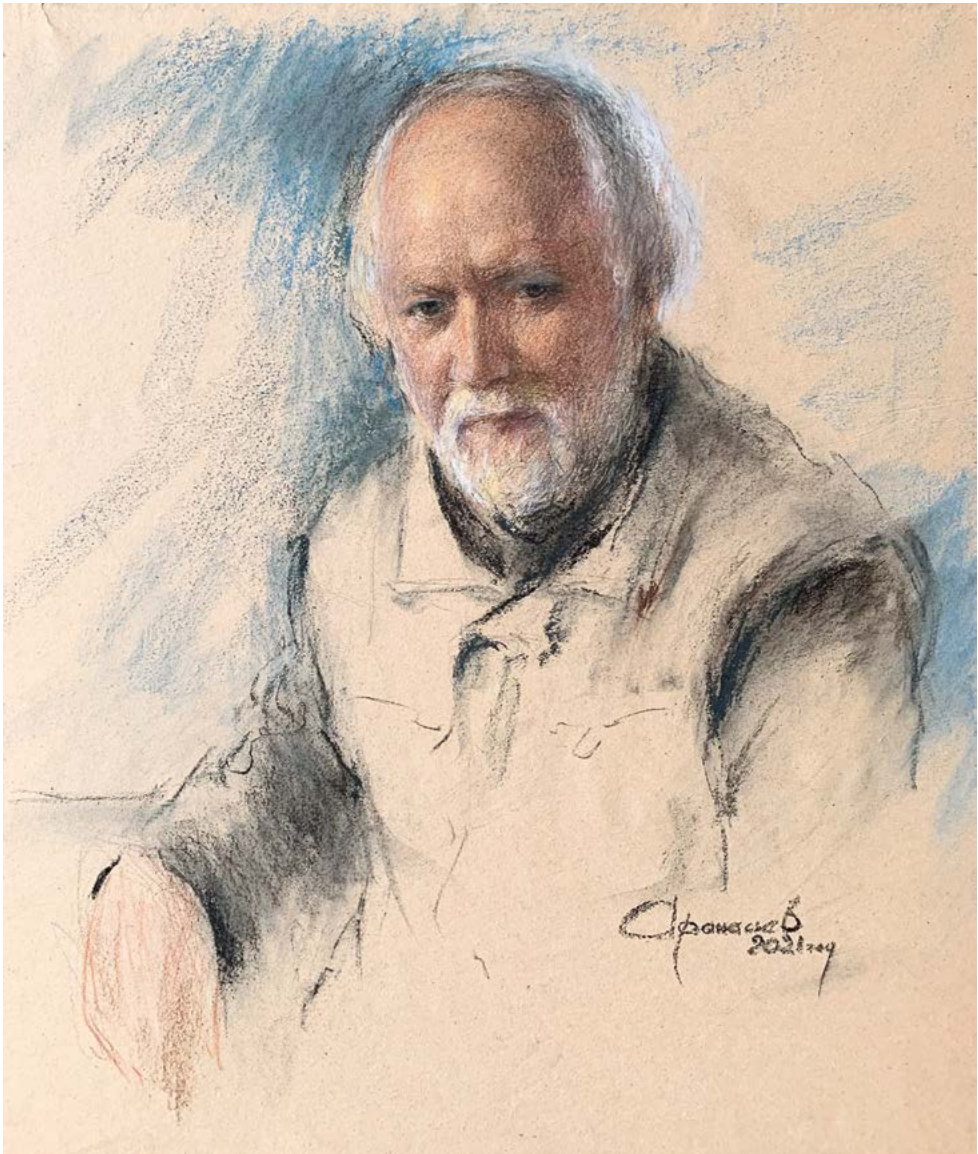
Marina Veryuzhskaya
Apple Blossom
9.45 x 12.6 | \$250



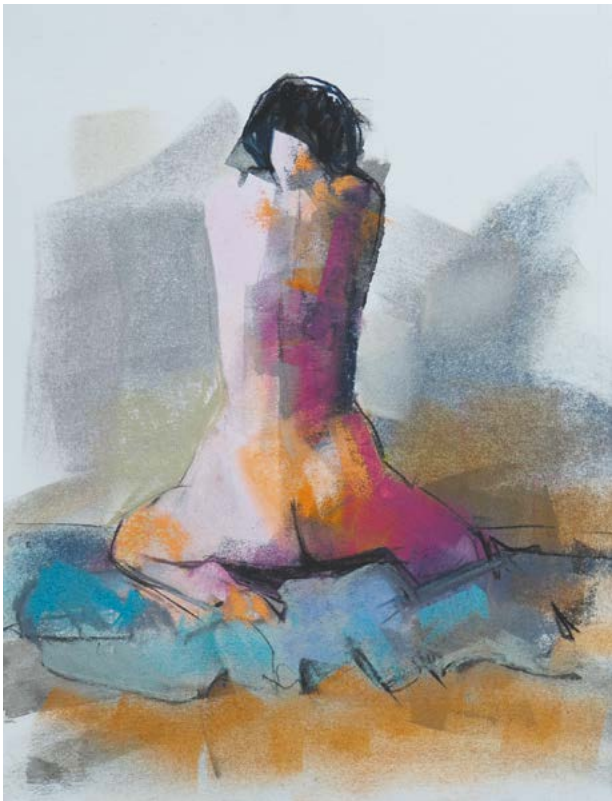
Marina Veryuzhskaya
Nadezhda
12.6 x 9.45 | NFS



Anatoly Afanasiev
Girl in Grey
14.5 x 12.5 | \$2000



Anatoly Afanasiev
We will Think on it
27.5 x 23.6 | NFS

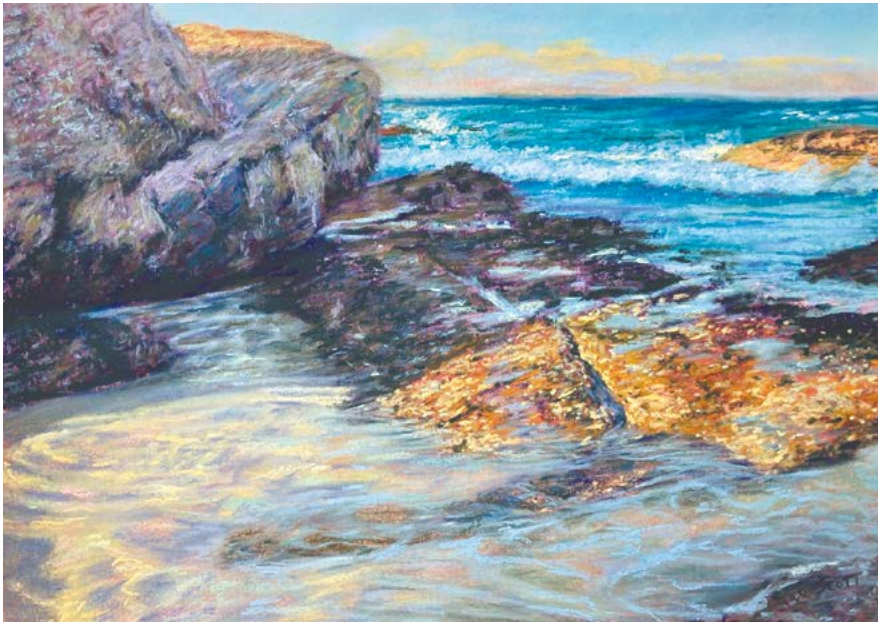


Laura Castell
Figure with Blue Rug
12 x 9 | NFS



Laura Castell
Standing Figure
17 x 12 | NFS

Kate Scott
Footsteps in the Sand
16 x 11 | \$450

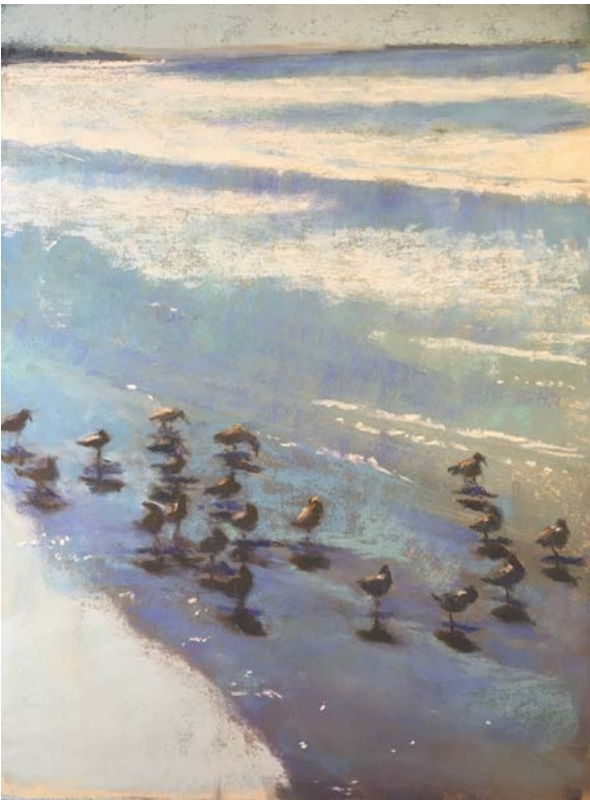


Kate Scott
Lost in the Light
11 x 16 | \$500



Janan Shannon
Lake Tahoe A Brief Encounter
14 x 18 | NFS

Susan Bjerke
Partly Cloudy
12 x 9 | NFS



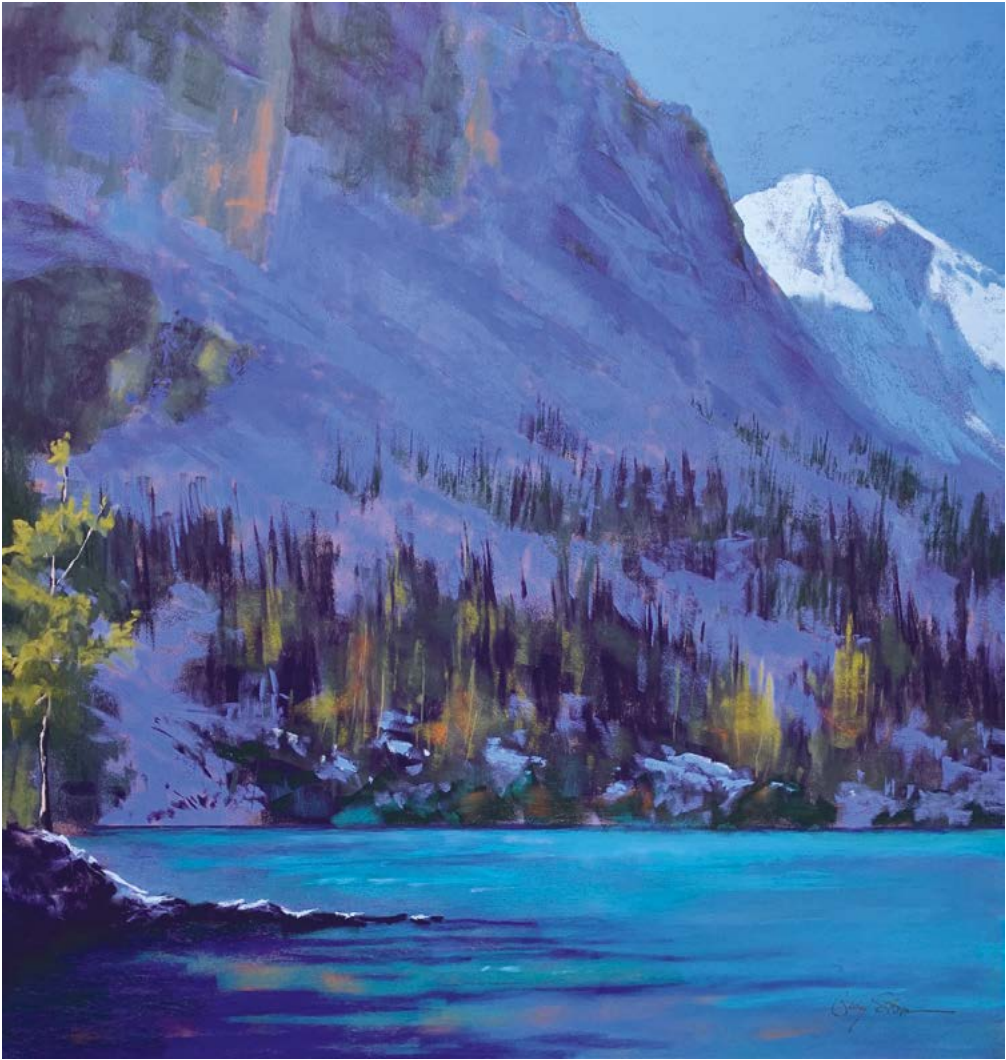
Susan Bjerke
My Happy Place
12 x 9 | \$150



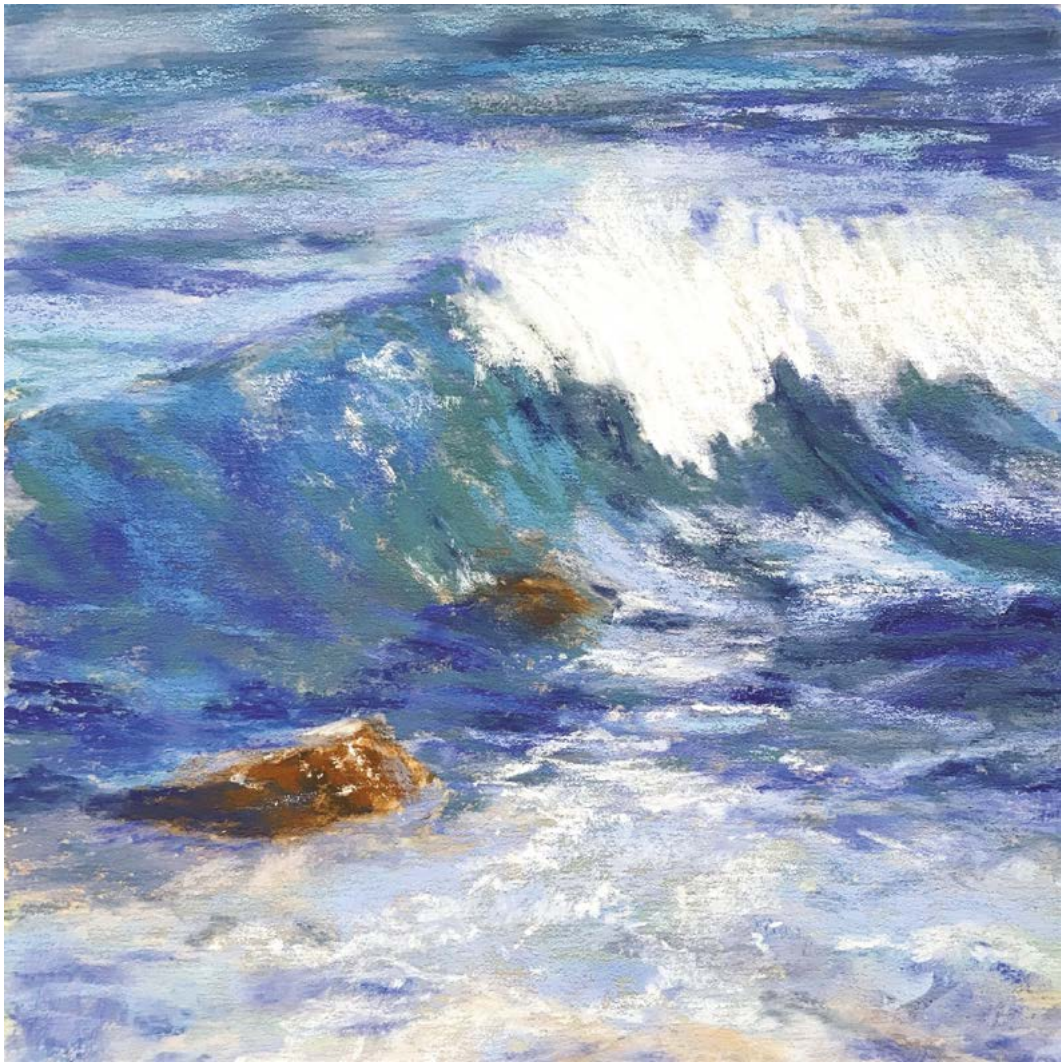
Greg Stone
Mountain Fork River Rhythms
12 x 9 | NFS



Greg Stone
Winter Creek Study
8 x 10 | NFS



Greg Stone
Emergence
19 x 19 | \$500



Kathy Bull
Wave
8 x 8 | NFS



Ekaterina Dobrokhotova
Sunrise
10 x 14 | \$550



Ekaterina Dobrokhotova
Mint Morning
18 x 24 | \$850



Michelle Spencer
Break Time
12 x 18 | \$350

Janis Barrett
Besties
16 x 20 | \$1500



Janis Barrett
Sleeping Beauty
20 x 16 | NFS



Jan Miller
Cast Your Net Wide
23.5 x 17.5 | NFS



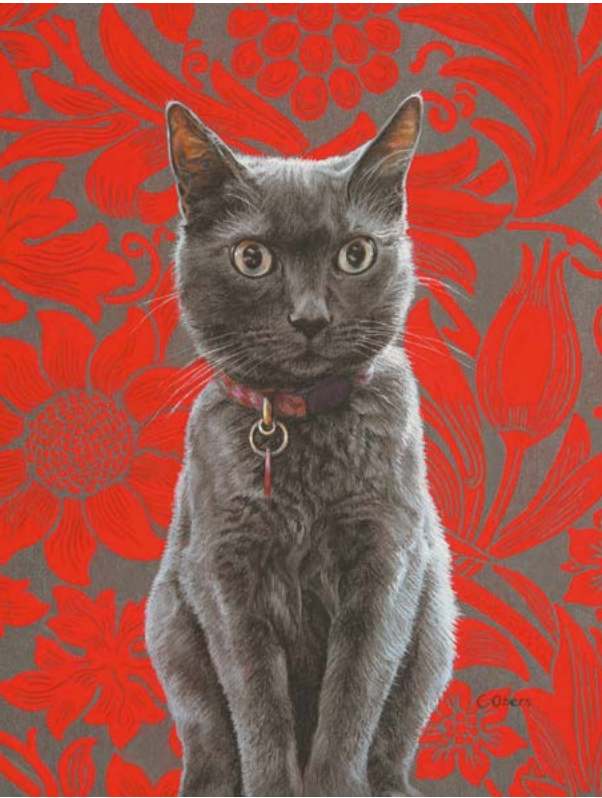
Jan Miller
Wayfarer
12 x 15.5 | NFS



Cosette Kosiba
Sun Salutation
12 x 12 | \$925



Christine Obers
Lexie
16 x 14 | NFS



Christine Obers
Littles
10 x 8 | NFS

Marla Baggetta
Morning Jaunt
12 x 11 | \$1500



Marla Baggetta
Peppermints
13 x 11 | \$1800



Adrien Little
Scratch My Back
15.75 x 22 | Sold



Nori Thorne
Hanging Up
Her Spurs
9 x 12 | \$800



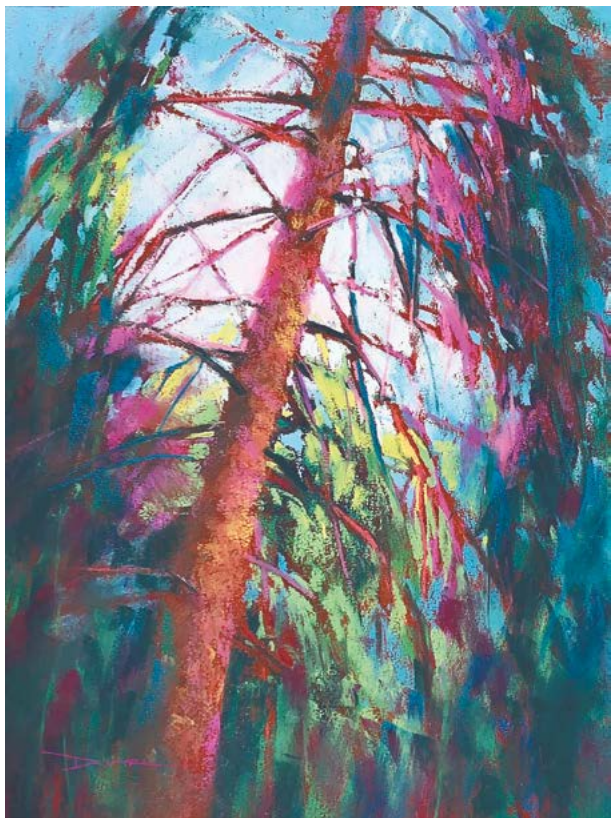
Karen Jones
Morning Nap
11 x 14 | NFS

Bernadette De Cesare
Covid Loss
30 x 24 | \$1000

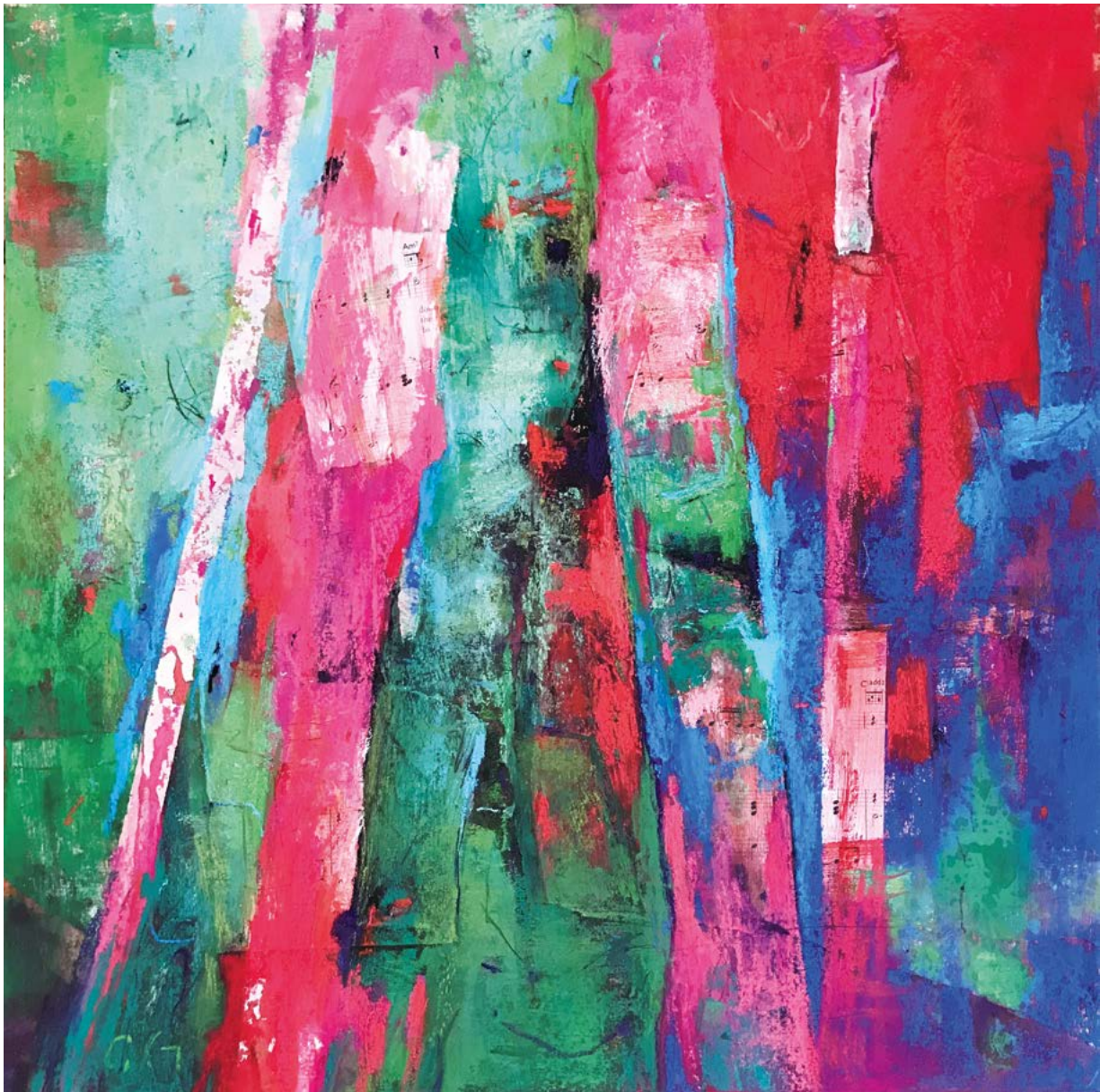


Bernadette De Cesare
My Octobus Tree
20 x 30 | \$1000

Terrilynn Dubreuil
Dancing with Light
12 x 9 | \$275



Martine Tulet
My Favorite Path along the River
16.5 x 12.6 | \$600



Cory Goulet
The Bamboo Forest
16 x 16 | 750

Cory Goulet
Beyond The Mask
22 x 28 | \$1800



Cory Goulet
Reflections In The Forest | 9 x 12 | \$450



Solene Tartivellew
Faraway Lands
24 x 16 | \$650



Solene Tartivellew
Spring Song
24 x 16 | \$650

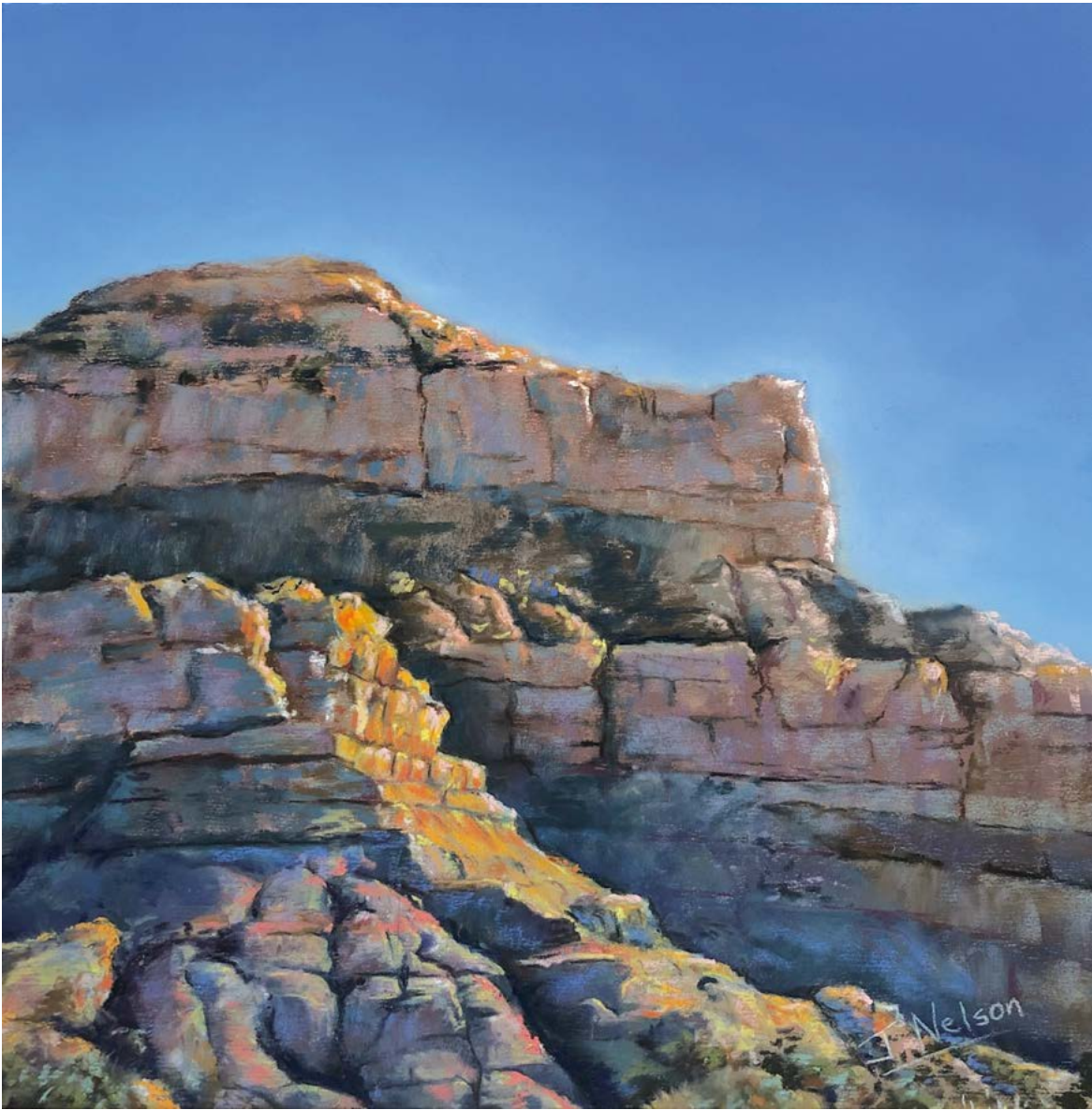


Catherine LaPointe Vollmer
Windswept 2
12 x 12 | \$600

Julia Fletcher
Last Light on the Oaks
12 x 9 | \$450

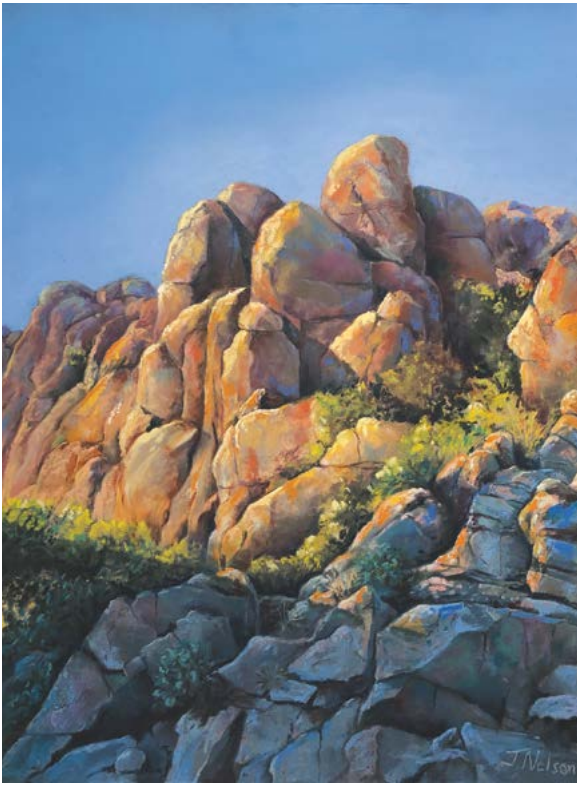
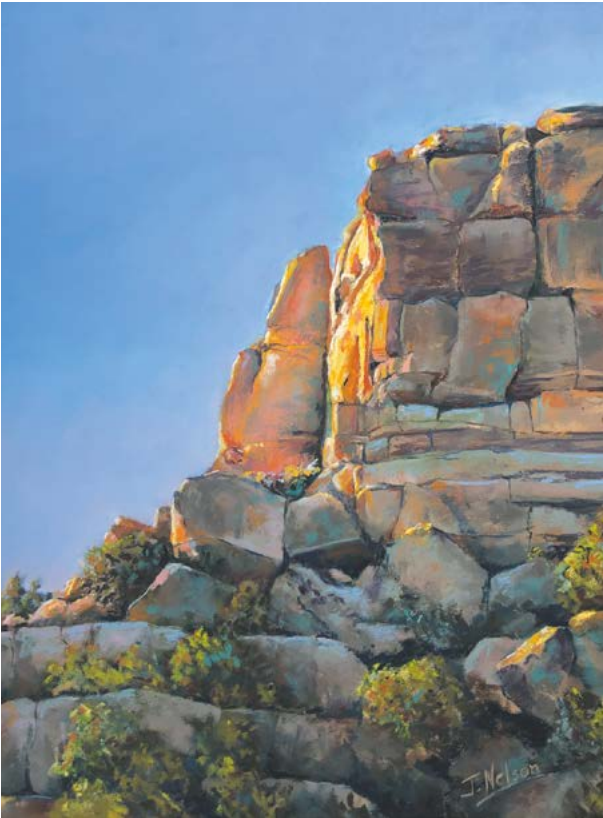


Mike Ray
Solitude Path
12 x 16 | \$675

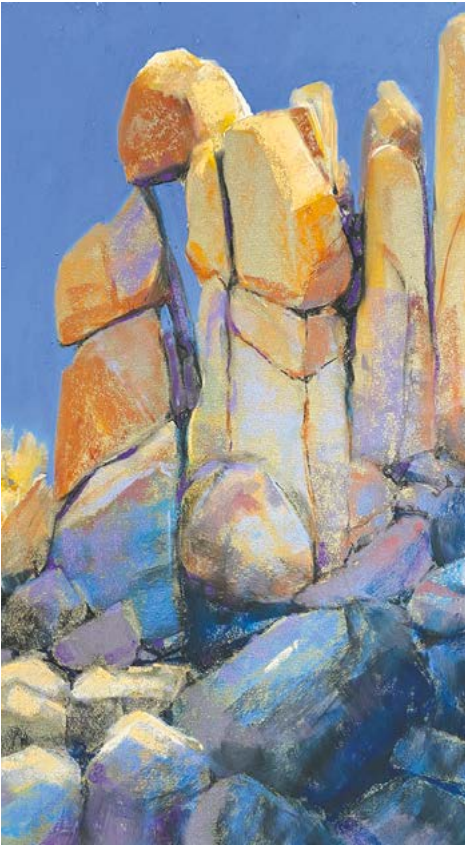


Juanita Nelson
The Huerfanos
12 x 12 | \$700

Juanita Nelson
Nageezi Sunset
16 x 12 | \$780



Juanita Nelson
Dragoons At Sunset
16 x 12 | \$780



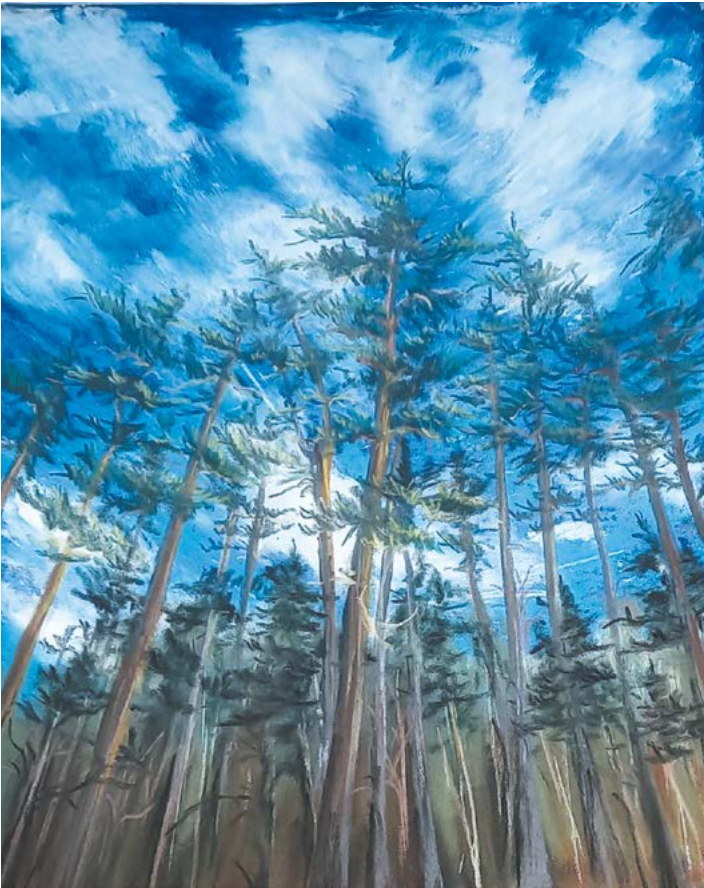
Jory Mason
Teetering
18 x 14 | \$700



Virginia Belser
Blue Cacti
11 x 14 | \$400



Jan Horn
The Rocks
12 x 9 | \$850



Volodymyr Kuntsiv
Life
18 x 24 | \$300



Debra Carter
Lees Ferry
9 x 12 | NFS

Randy Hamburg
Recollections of Sunset
18 x 12 | \$750



Patti Hagan
Sun-Kissed Canyon
8 x 16 | NFS





Sharon Frey
Another Spring
9 x 12 | \$500



Melissa Losano
Lumière
25 x 20 | \$890

Nancy Komick
Morning Passage
24 x 18 | NFS



Nancy Komick
Color Pop Pop
18 x 24 | NFS





Yael Maimon
Dinner Leftovers
18 x 24 | NFS



Yael Maimon
Homey Meal
16 x 15 | NFS



Yael Maimon
Meals and Miles
19 x 16 | NFS



Natalia Ayas Bezuglova
Joye
8 x 7 | NFS

Natalia Ayas Bezuglova
In the Woods
12 x 18 | \$300



Victoria Udovikina
Confined
12 x 9 | \$500



Tatsiana Harbacheuskaya
Holiday Vibes
15 x 11 | \$600



Tatsiana Harbacheuskaya
Roses with Grapes
12 x 9 | \$600

Margy West
Owen Waiting
9 x 6 | \$200



Cindy Kopenhafer
Golden Palette
12 x 17 | \$795

Anna Novodvorskaya
Summer on the Shelf
49 x 63 | NFS



Elena Askeri
Californian Red
9 x 12 | \$200



Nataly Mikhailiuk
Music of the Past
9 x 27 | NFS



Julia Bezgacheva
Shelf Inhabitants of Unknown Breed
9 x 12 | NFS



Tania Kuznetsova
Natures Mask
15.63 x 11.61 | NFS



Henrieta Lapshina
The Lake the Yacht. The Lamp the Night
11 x 18 | \$700



Henrieta Lapshina
Fire Walk with me
11 x 18 | \$700

Our sponsors and partners



We are thankful for all the volunteer work

We are thankful for all the volunteer work

Katya Zaytseva

Anne Gee

Nancy Komick

Victoria Udovikina

Olena Nosaryeva

Olga Romanchikova

Pauline Vitlina

Christine Bowman

Ray Mealey

Jeff Earle

Cindy Gillett

Julia Bezgacheva

Dasha Jamison

And all the Red Rock members

Special thank you goes to Joe Baker and ShowSubmit.com

© Red Rock Pastel Society of Nevada

www.redrockpsnv.org

On the cover: "Ballet 2" Sergey Bakin